



SCHOOLCITY BENCHMARK QUARTER 1 RESULTS 2017

Assessment & Program Evaluation (A&E)

Dr. Freitas

10/24/17

Purpose of Standardized Math and ELA Benchmarks

- Benchmarks:

- use the *Arizona College and Career Readiness Standards*
- are aligned to the District's curriculum 4.0 pacing guide
- are intended to measure students' progress through the curriculum

- Teachers can use these assessments:

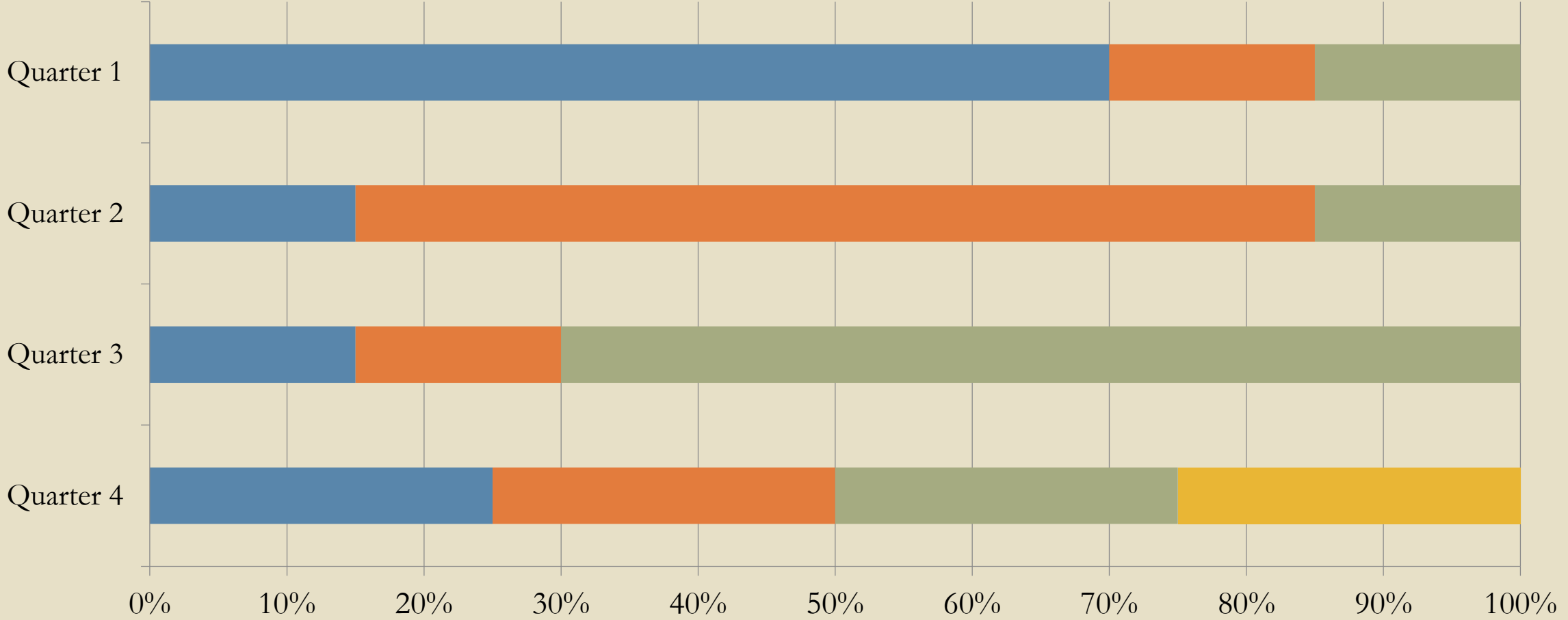
- to evaluate the degree to which students have mastered selected standards over time in their classrooms
- To compare their results with the district averages

Who will take the Benchmark Assessments?

- **ELA:**
 - All students in grades 2 – 10
 - Writing prompt with Quarter 2 benchmark only
- **Math:**
 - All students in grades 2 – 8 and students enrolled in Algebra 1, Geometry, Algebra 2
- **Exceptions:**
 - ELL students: take math BM only
 - ExEd students: take BM that matches instruction, as appropriate

Benchmark Model Weighting of Questions

■ Q1 ■ Q2 ■ Q3 ■ Q4



Expectation for Proficiency by Quarter

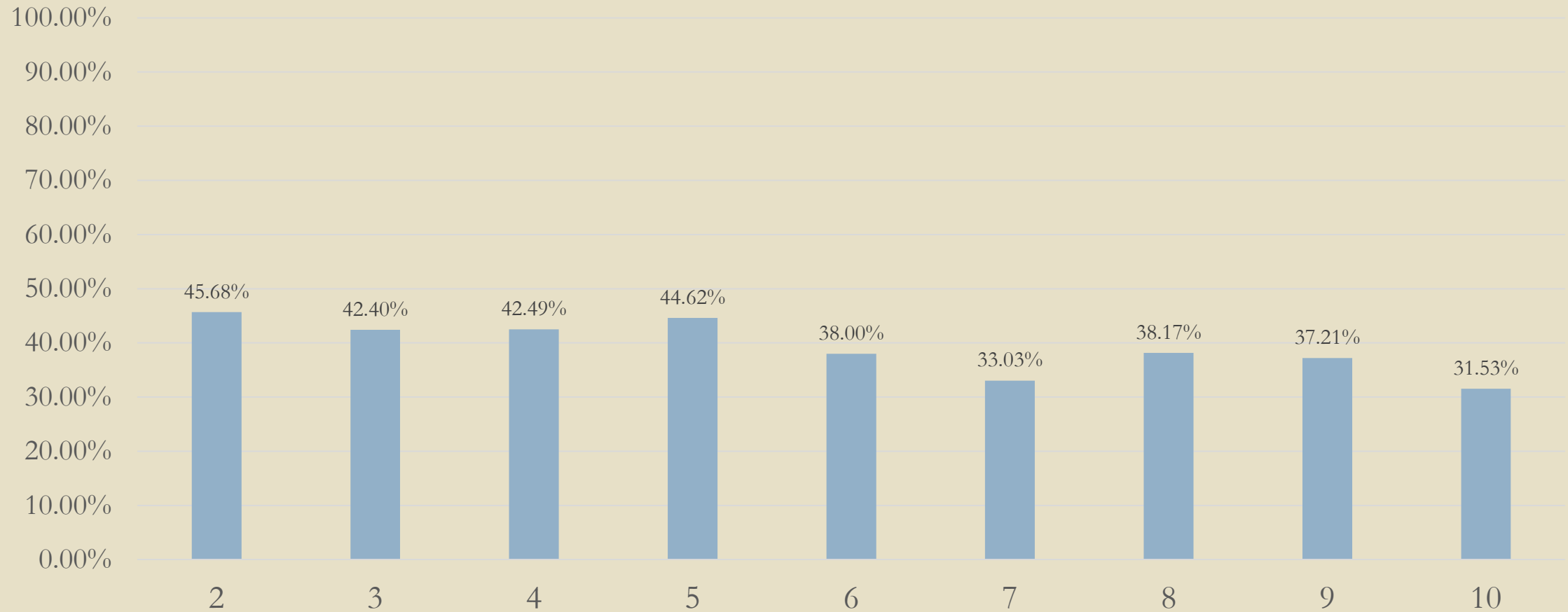
- **Quarter 1:** Students should score about 40 – 60% of the test correct or score in the Partially Proficient range
- **Quarter 2:** Students should score about 50 – 70% of the test correct or score in the Partially Proficient/Proficient range
- **Quarter 3:** Students should score about 60 – 80% of the test correct or score in the Proficient/Highly Proficient range
- *Quarter 4 (optional): Students should score about 60 – 80% of the test correct or score in the Proficient/Highly Proficient range*

Assessment Blueprints

3rd Grade ELA Benchmark 1 2017-18

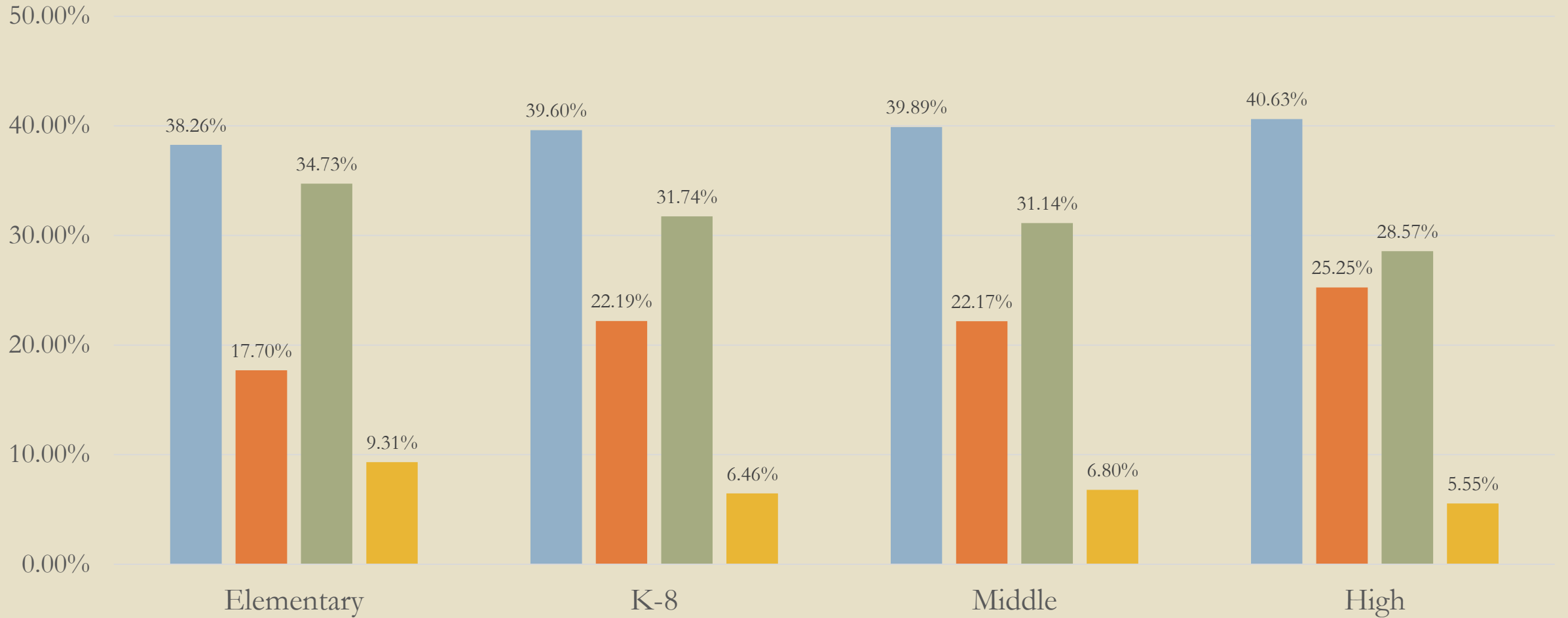
From Quarter 1	Highly-Leveraged Standards	Corresponding Standards	Number of Items on Test
	3.RL.1,2,3,9 3.RF.3c 3.W.3a-d 3.SL.3 3.L.1b-f	3.RL.6,7 3.RI.7,8 3.RF.3d 3.W.6,8 3.SL.1b-d,4 3.L.a,g-j,2a-b	21
From Quarter 2	Highly-Leveraged Standards	Corresponding Standards	Number of Items on Test
	3.RL.1,3 3.RI.1,2,3,4,5,8 3.RF.3d 3.W.2a-d,4,6 3.SL.2 3.L.1g-j,2d,4d	3.RI.7,9 3.RF.3a-b 3.W.5,7,8 3.SL.3 3.L.1a-f,4a	5
From Quarter 3	Highly-Leveraged Standards	Corresponding Standards	Number of Items on Test
	3.RL.3,4,5,6,7 3.RI.1,8 3.RF.3a-b 3.W.1a-d,6 3.SL.3 3.L.1a-j,2c	3.RL.1,2,9 3.RI.5,7,9 3.RF.4a-b 3.W.4,8 3.SL.1a,2 3.L.2a-b,3a-b,4b-d	4

Quarter 1 Benchmark Results: ELA Mean Percent Proficient by Grade Level

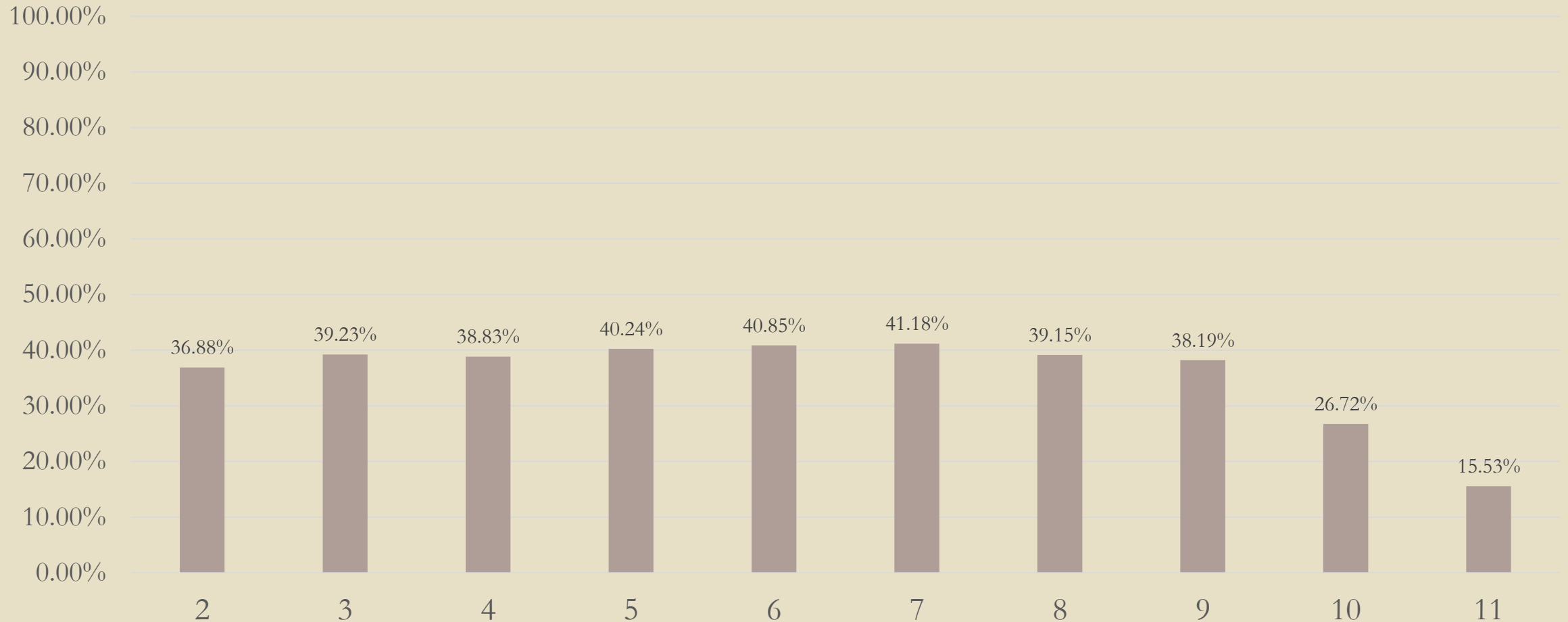


Quarter 1 ELA Proficiency Levels by School Type

■ Minimally Proficient ■ Partially Proficient ■ Proficient ■ Highly Proficient

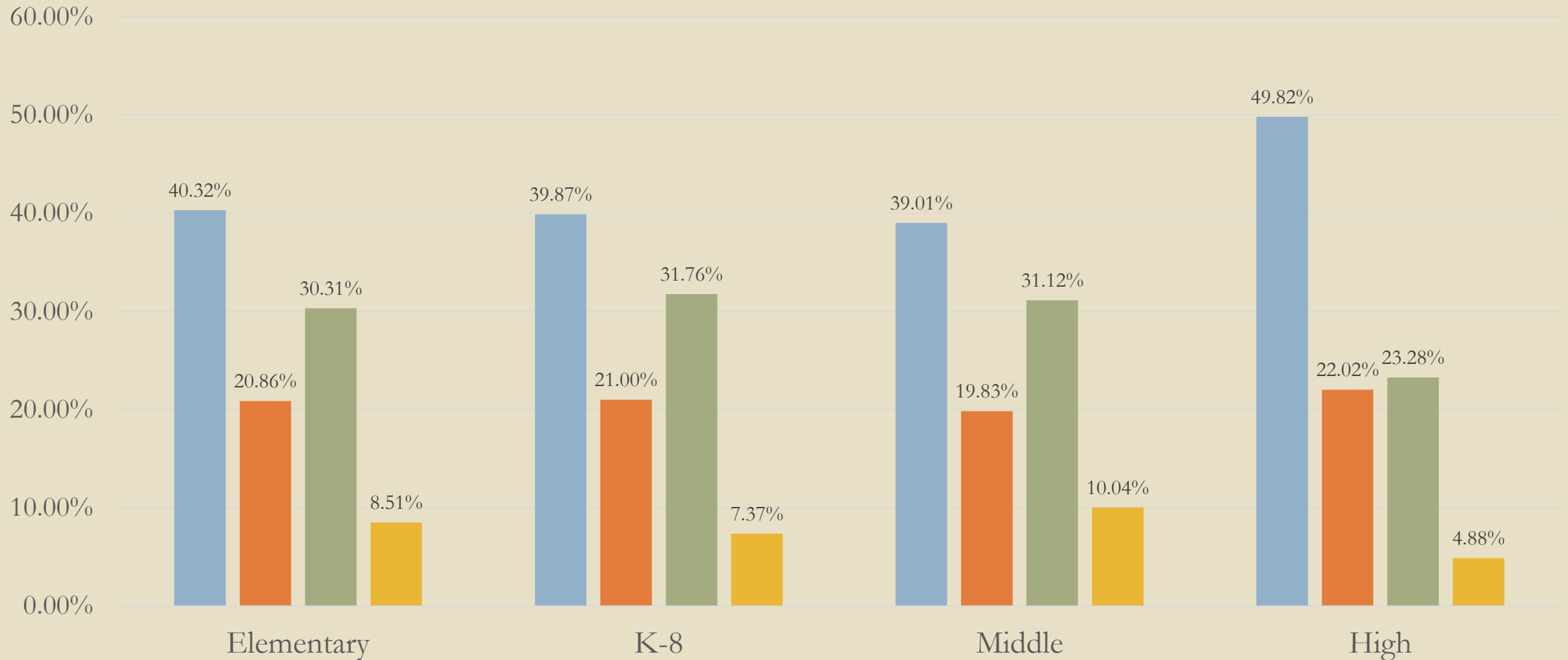


Quarter 1 Benchmark Results: Math Mean Percent Proficient by Grade Level



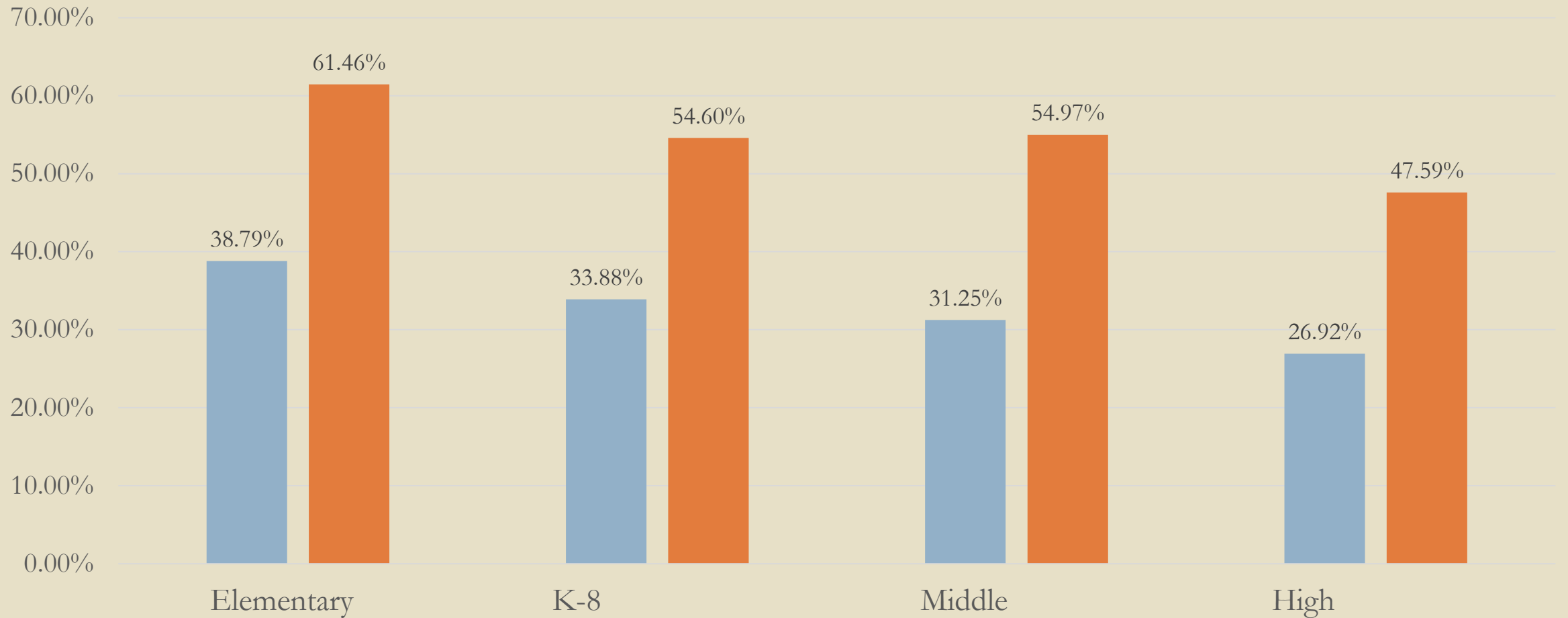
Quarter 1 Math Proficiency Levels by School Type

■ Minimally Proficient ■ Partially Proficient ■ Proficient ■ Highly Proficient



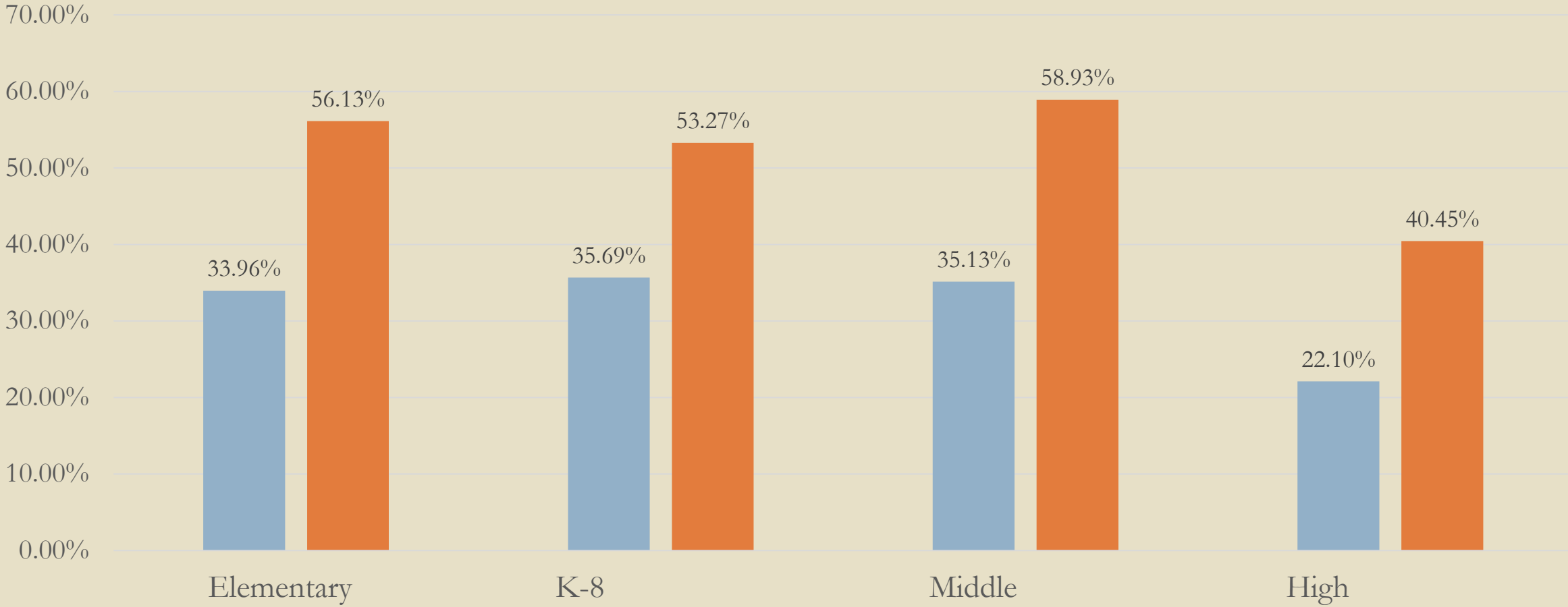
Comparison of Quarter 1 ELA Percent Proficient by FRL Status and School Type

FRL Paid



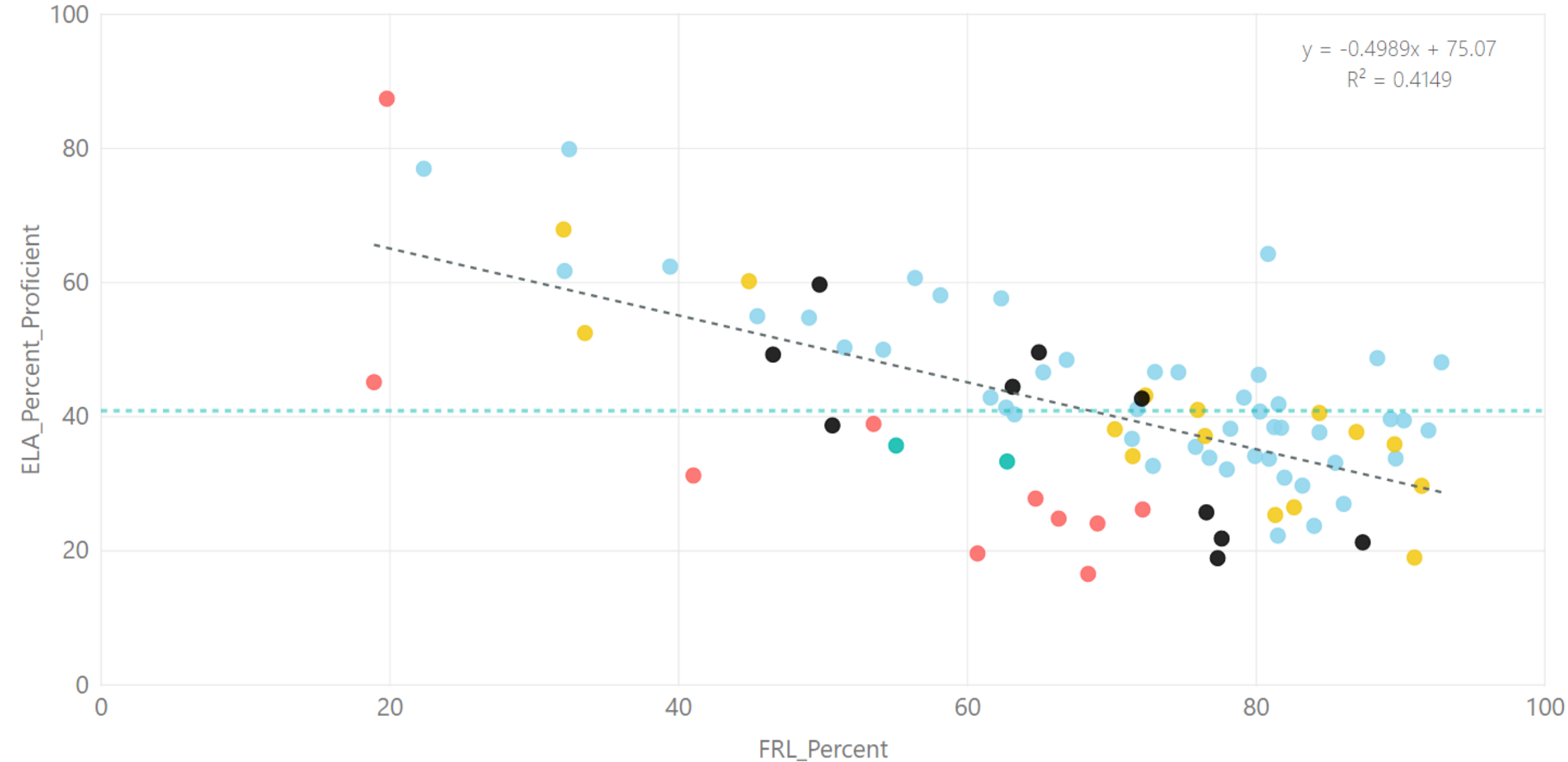
Comparison of Quarter 1 Math Percent Proficient by FRL Status and School Type

FRL Paid



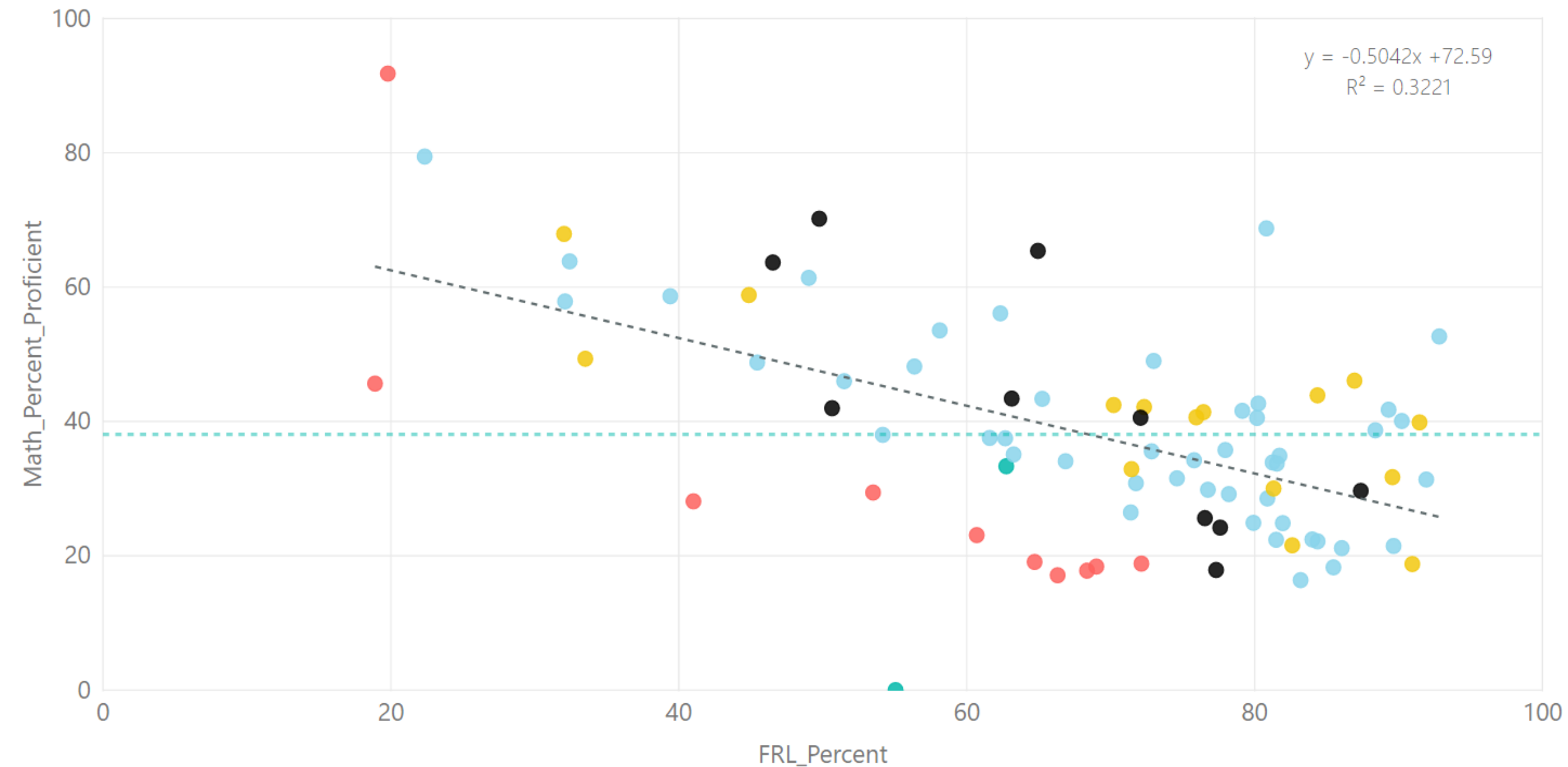
FRL and ELA Proficiency (SY2017-2018 Q1 Benchmarks)

School_Type ● Alternative Schools ● Elementary Schools ● High Schools ● K-8 Schools ● Middle Schools



FRL and Math Proficiency (SY2017-2018 Q1 Benchmarks)

School_Type ● Alternative Schools ● Elementary Schools ● High Schools ● K-8 Schools ● Middle Schools



Correlations between 2017-18 Quarter 1 Benchmark to 2016-17 AzMERIT

2017-18 Grade Level	ELA Q1 to AzMERIT ELA	Math Q1 to AzMERIT Math
4	.79	.81
5	.76	.77
6	.80	.80
7	.77	.78
8	.80	.64
9	.75	.83
10	.70	.50
11	NA	.54