

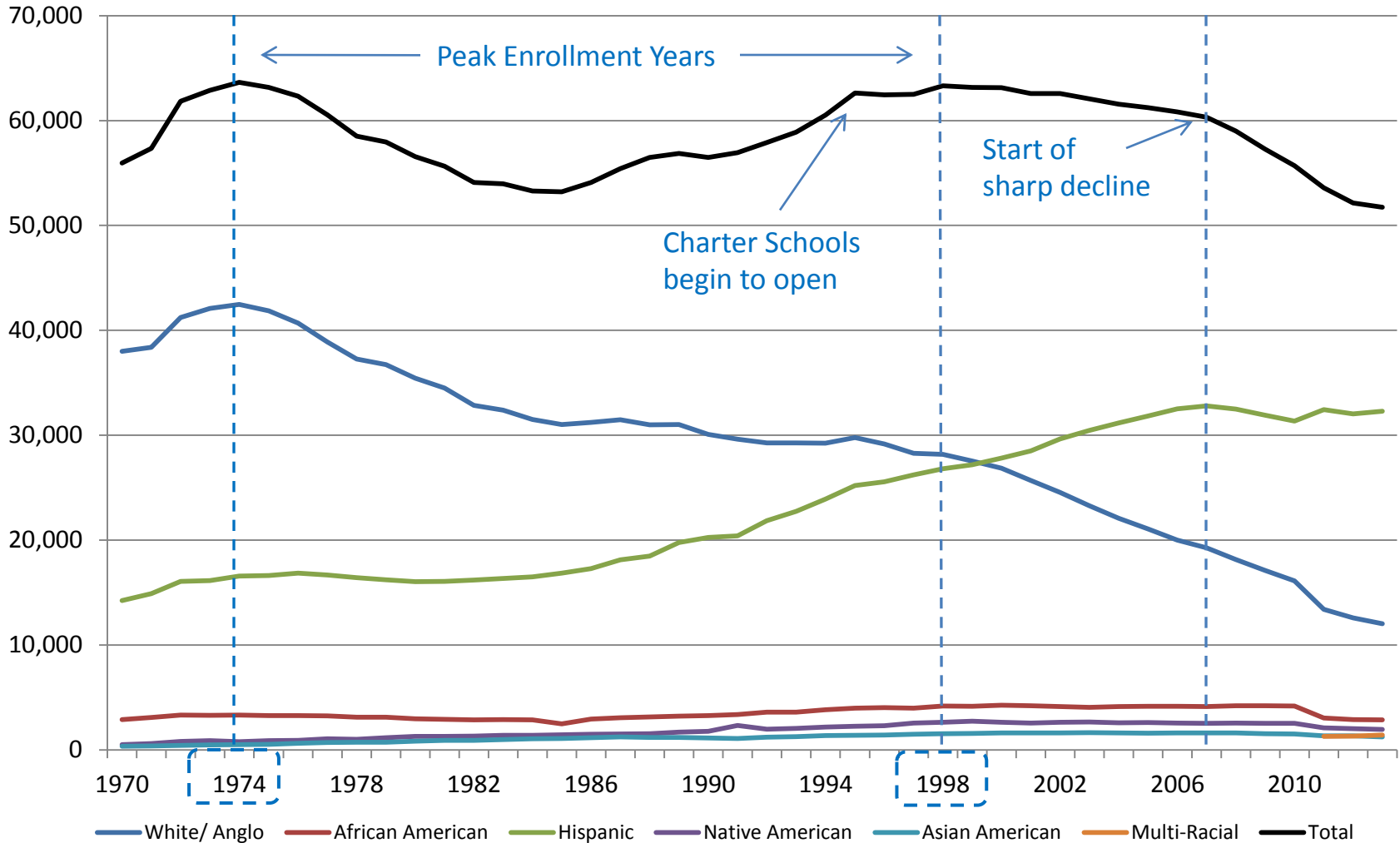
# District Enrollment Update

Governing Board Meeting

September 10, 2013

# Total District Enrollment by Ethnicity

1969-70 to 2012-13



# TUSD Daily Membership – First 30 Days

Un-weighted - Previous Five Years and Year-to-date

Instructional Day	2008-09	2009-10	2010-11	2011-12	2012-13	2013-14	2014 vs 2013
1	54,864	53,660	51,437	50,162	49,031	47,557	-1,474
2	55,454	54,037	51,828	50,631	49,324	47,810	-1,514
3	55,805	54,282	52,071	50,825	49,766	48,195	-1,571
4	55,981	54,390	52,202	50,953	49,969	48,410	-1,559
5	56,063	54,459	52,307	50,998	50,102	48,536	-1,566
6	56,272	54,918	52,730	51,469	50,192	48,604	-1,588
7	56,409	55,043	52,819	51,568	50,198	48,621	-1,577
8	56,477	55,124	52,874	51,609	50,644	48,951	-1,693
9	56,520	55,171	52,883	51,635	50,734	49,012	-1,722
10	56,494	55,187	52,868	51,611	50,803	49,086	-1,717
11	56,884	55,213	52,910	51,650	50,856	49,147	-1,709
12	56,941	55,283	52,958	51,698	50,862	49,148	-1,715
13	56,990	55,320	52,986	51,708	50,941	49,202	-1,739
14	56,987	55,338	52,998	51,716	50,959	49,246	-1,713
15	56,967	55,315	52,984	51,690	50,985	49,243	-1,742
16	56,975	55,356	52,971	51,698	50,999	49,269	-1,731
17	57,004	55,381	53,020	51,759	50,993	49,273	-1,721
18	57,010	55,399	53,051	51,770	51,002	49,289	-1,713
19	56,990	55,402	53,029	51,761	51,033	49,347	-1,686
20	56,996	55,411	53,042	51,761	51,017	49,373	-1,644
21	57,018	55,461	53,066	51,799	51,017		
22	57,019	<b>55,492</b>	<b>53,067</b>	51,805	50,985		
23	57,031	55,486	53,045	51,778	50,940		
24	57,005	55,463	53,023	51,751	50,968		
25	56,993	55,450	53,039	51,762	51,000		
26	57,,032	55,467	53,048	<b>51,818</b>	50,989		
27	<b>57,047</b>	55,470	53,040	51,803	51,008		
28	57,046	55,455	53,015	51,801	51,021		
29	57,014	55,419	52,983	51,773	51,011		
30	57,005	55,380	52,951	51,739	<b>51,035</b>		



# Average Daily Membership Prediction

---

Analysis of the daily membership curve has shown that:

- TUSD enrollment peaks somewhere between the 20<sup>th</sup> and 30<sup>th</sup> day each year
- and, the full 100-day average can be predicted by averaging a sample of days during the first month of the school year

## Daily Membership – Predicted vs. Actual (Average First 100 Days)

Grade	2009 ADM		2010 ADM		2011 ADM		2012 ADM		2013 ADM		2014 ADM	
	Predicted	Actual	Predicted	Actual	Predicted	Actual	Predicted	Actual	Predicted	Actual	Predicted	Actual
-2	54.00	52.76	39.43	40.33	33.71	34.00	42.00	41.97	39.14	40.75		
-1	94.71	241.94	220.50	270.30	210.50	266.38	203.00	235.60	245.86	281.62	18.50	
0	2197.71	2212.65	2157.36	2181.18	2044.71	2065.31	2065.86	2089.09	2136.93	2135.34	2025.21	
1	4532.14	4553.26	4407.29	4430.42	4198.14	4212.86	4152.43	4171.18	4165.14	4153.35	4151.57	
2	4616.29	4613.52	4454.29	4460.17	4219.29	4210.25	4097.86	4108.47	4075.43	4074.94	3934.86	
3	4652.43	4636.08	4402.14	4404.13	4228.57	4229.86	4074.43	4098.62	4055.00	4036.26	3909.07	
4	4615.14	4600.64	4425.71	4453.71	4222.86	4229.94	4073.14	4084.95	4037.43	4036.73	3866.57	
5	4406.00	4390.99	4363.86	4370.44	4203.00	4197.75	4070.43	4082.10	3937.57	3938.91	3814.43	
6	4100.00	4097.83	3886.14	3895.26	3837.86	3834.56	3753.29	3746.41	3712.50	3702.32	3602.36	
7	4038.86	4039.19	3950.57	3963.28	3796.14	3788.59	3730.57	3731.18	3685.61	3670.55	3554.71	
8	4043.29	4040.91	3916.57	3917.63	3832.86	3813.86	3696.29	3698.09	3692.68	3679.75	3621.57	
9	5132.86	5008.83	4729.07	4644.52	4376.64	4320.41	4030.14	3982.83	3961.29	3911.02	4053.32	
10	4304.68	4208.42	4291.43	4209.69	4200.39	4079.42	3989.54	3870.01	3823.86	3741.04	3729.29	
11	4103.82	3964.79	3919.96	3827.94	3957.46	3799.61	3733.61	3589.84	3683.86	3593.80	3466.57	
12	3491.96	3454.86	3656.79	3611.43	3627.39	3636.30	3659.18	3544.60	3449.82	3353.77	3523.75	
Total	54383.89	54116.66	52821.11	52680.42	50989.54	50719.10	49371.75	49074.92	48702.11	48350.16	47271.79	
Actual vs. Predicted		-267.23		-140.68		-270.43		-296.83		-351.94		

Change in:	2009 to 2010		2010 to 2011		2011 to 2012		2012 to 2013		2013 to 2014	
	N	%	N	%	N	%	N	%	N	%
Actual ADM	-1436.24	-2.7%	-1961.32	-3.7%	-1644.18	-3.2%	-724.76	-1.5%		
Predicted ADM	-1562.79	-2.9%	-1831.57	-3.5%	-1617.79	-3.2%	-669.64	-1.4%	-1430.32	-2.9%

# Frequently Asked Questions

---

How did school consolidation impact this year's enrollment?

What about Charter schools?

# School Consolidation



# Annual Enrollment Cycle – District Total

<i>School Year</i>	Active on Last Day of School Year	May\Summer Graduates	Continuing Students	<i>School Year</i>	Did Not Return to TUSD the Following Year	Returned to TUSD	Returned to Same School or Promoted to Middle or High	Returned to a Different TUSD School	Did Not Return to TUSD the Following Year	Returned to TUSD	Returned to Same School or Promoted to Middle or High	Returned to a Different TUSD School
<b>1997</b>	59870	<b>2786</b>	<b>57084</b>	<b>1998</b>	<b>4280</b>	<b>52804</b>	49027	3777	<b>7.5%</b>	<b>92.5%</b>	85.9%	6.6%
<b>1998</b>	60981	<b>2994</b>	<b>57987</b>	<b>1999</b>	<b>4770</b>	<b>53217</b>	49297	3920	<b>8.2%</b>	<b>91.8%</b>	85.0%	6.8%
<b>1999</b>	60969	<b>2904</b>	<b>58065</b>	<b>2000</b>	<b>4749</b>	<b>53316</b>	49625	3691	<b>8.2%</b>	<b>91.8%</b>	85.5%	6.4%
<b>2000</b>	60695	<b>3008</b>	<b>57687</b>	<b>2001</b>	<b>4836</b>	<b>52851</b>	49286	3565	<b>8.4%</b>	<b>91.6%</b>	85.4%	6.2%
<b>2001</b>	60516	<b>3055</b>	<b>57461</b>	<b>2002</b>	<b>4743</b>	<b>52718</b>	49258	3460	<b>8.3%</b>	<b>91.7%</b>	85.7%	6.0%
<b>2002</b>	60467	<b>3030</b>	<b>57437</b>	<b>2003</b>	<b>5001</b>	<b>52436</b>	48431	4005	<b>8.7%</b>	<b>91.3%</b>	84.3%	7.0%
<b>2003</b>	59924	<b>3040</b>	<b>56884</b>	<b>2004</b>	<b>4989</b>	<b>51895</b>	48600	3295	<b>8.8%</b>	<b>91.2%</b>	85.4%	5.8%
<b>2004</b>	59525	<b>3324</b>	<b>56201</b>	<b>2005</b>	<b>4951</b>	<b>51250</b>	47792	3458	<b>8.8%</b>	<b>91.2%</b>	85.0%	6.2%
<b>2005</b>	59233	<b>3129</b>	<b>56104</b>	<b>2006</b>	<b>5084</b>	<b>51020</b>	47702	3318	<b>9.1%</b>	<b>90.9%</b>	85.0%	5.9%
<b>2006</b>	58373	<b>3083</b>	<b>55290</b>	<b>2007</b>	<b>4642</b>	<b>50648</b>	47369	3279	<b>8.4%</b>	<b>91.6%</b>	85.7%	5.9%
<b>2007</b>	58104	<b>3209</b>	<b>54895</b>	<b>2008</b>	<b>5093</b>	<b>49802</b>	46663	3139	<b>9.3%</b>	<b>90.7%</b>	85.0%	5.7%
<b>2008</b>	56289	<b>2967</b>	<b>53322</b>	<b>2009</b>	<b>5085</b>	<b>48237</b>	45141	3096	<b>9.5%</b>	<b>90.5%</b>	84.7%	5.8%
<b>2009</b>	54975	<b>3110</b>	<b>51865</b>	<b>2010</b>	<b>4907</b>	<b>46958</b>	43960	2998	<b>9.5%</b>	<b>90.5%</b>	84.8%	5.8%
<b>2010</b>	53725	<b>3171</b>	<b>50554</b>	<b>2011</b>	<b>5195</b>	<b>45359</b>	40790	4569	<b>10.3%</b>	<b>89.7%</b>	80.7%	9.0%
<b>2011</b>	51573	<b>3025</b>	<b>48548</b>	<b>2012</b>	<b>4858</b>	<b>43690</b>	40905	2785	<b>10.0%</b>	<b>90.0%</b>	84.3%	5.7%
<b>2012</b>	50117	<b>2814</b>	<b>47303</b>	<b>2013</b>	<b>4471</b>	<b>42832</b>	40221	2611	<b>9.5%</b>	<b>90.5%</b>	85.0%	5.5%
<b>2013</b>	49124	<b>2596</b>	<b>46528</b>	<b>2014</b>	<b>5181</b>	<b>41347</b>	37057	4290	<b>11.1%</b>	<b>88.9%</b>	79.6%	9.2%
<b>Avg.</b>	57321	<b>3014</b>	<b>54307</b>	<b>Avg.</b>	<b>4873</b>	<b>49434</b>	45948	3486	<b>9.0%</b>	<b>91.0%</b>	84.6%	6.4%

# Annual Enrollment Cycle for the Nine Schools Consolidated in 2010

<i>School Year</i>	Active on Last Day of School Year	May\Summer Graduates	Continuing Students	<i>School Year</i>	Did Not Return to TUSD the Following Year	Returned to TUSD	Returned to Same School or Promoted to Middle or High	Returned to a Different TUSD School	Did Not Return to TUSD the Following Year	Returned to TUSD	Returned to Same School or Promoted to Middle or High	Returned to a Different TUSD School
1997	3361	0	3361	1998	266	3095	2765	330	7.9%	92.1%	82.3%	9.8%
1998	3337	0	3337	1999	262	3075	2780	295	7.9%	92.1%	83.3%	8.8%
1999	3426	0	3426	2000	269	3157	2877	280	7.9%	92.1%	84.0%	8.2%
2000	3345	0	3345	2001	330	3015	2637	378	9.9%	90.1%	78.8%	11.3%
2001	3093	0	3093	2002	254	2839	2527	312	8.2%	91.8%	81.7%	10.1%
2002	2885	0	2885	2003	271	2614	2395	219	9.4%	90.6%	83.0%	7.6%
2003	2790	0	2790	2004	235	2555	2332	223	8.4%	91.6%	83.6%	8.0%
2004	2772	0	2772	2005	281	2491	2237	254	10.1%	89.9%	80.7%	9.2%
2005	2677	0	2677	2006	255	2422	2149	273	9.5%	90.5%	80.3%	10.2%
2006	2653	0	2653	2007	210	2443	2161	282	7.9%	92.1%	81.5%	10.6%
2007	2668	0	2668	2008	296	2372	2109	263	11.1%	88.9%	79.0%	9.9%
2008	2377	0	2377	2009	247	2130	1896	234	10.4%	89.6%	79.8%	9.8%
2009	2256	0	2256	2010	241	2015	1758	257	10.7%	89.3%	77.9%	11.4%
2010	2058	0	2058	2011	315	1743	302	1441	15.3%	84.7%	14.7%	70.0%
2011												
2012												
2013												
<b>Avg.</b>	2836	0	2836	<b>Avg.</b>	267	2569	2209	360	9.4%	90.6%	77.9%	12.7%

# Net Impact of 2010 School Consolidation

---

- Of the 2058 continuing students enrolled in the nine schools consolidated in 2010, 15% did not return to a TUSD school.
- On average, in the three years prior to consolidation, 11% of the continuing students at these nine schools did not return to a TUSD school.
- Therefore, the net difference in non-returning students before and after consolidation is 4%, or approximately 100 students.

# Annual Enrollment Cycle for the Eleven Schools Consolidated in 2013

<i>School Year</i>	Active on Last Day of School Year	May\Summer Graduates	Continuing Students	<i>School Year</i>	Did Not Return to TUSD the Following Year	Returned to TUSD	Returned to Same School or Promoted to Middle or High	Returned to a Different TUSD School	Did Not Return to TUSD the Following Year	Returned to TUSD	Returned to Same School or Promoted to Middle or High	Returned to a Different TUSD School
<b>1997</b>	5451	7	5444	<b>1998</b>	356	5088	4730	358	6.5%	93.5%	86.9%	6.6%
<b>1998</b>	5455	11	5444	<b>1999</b>	440	5004	4668	336	8.1%	91.9%	85.7%	6.2%
<b>1999</b>	5587	9	5578	<b>2000</b>	444	5134	4794	340	8.0%	92.0%	85.9%	6.1%
<b>2000</b>	5558	6	5552	<b>2001</b>	408	5144	4822	322	7.3%	92.7%	86.9%	5.8%
<b>2001</b>	5553	28	5525	<b>2002</b>	461	5064	4754	310	8.3%	91.7%	86.0%	5.6%
<b>2002</b>	5582	27	5555	<b>2003</b>	442	5113	4800	313	8.0%	92.0%	86.4%	5.6%
<b>2003</b>	5595	32	5563	<b>2004</b>	501	5062	4737	325	9.0%	91.0%	85.2%	5.8%
<b>2004</b>	5494	27	5467	<b>2005</b>	455	5012	4671	341	8.3%	91.7%	85.4%	6.2%
<b>2005</b>	5490	28	5462	<b>2006</b>	541	4921	4607	314	9.9%	90.1%	84.3%	5.7%
<b>2006</b>	5275	38	5237	<b>2007</b>	438	4799	4546	253	8.4%	91.6%	86.8%	4.8%
<b>2007</b>	5202	35	5167	<b>2008</b>	472	4695	4444	251	9.1%	90.9%	86.0%	4.9%
<b>2008</b>	5017	23	4994	<b>2009</b>	484	4510	4195	315	9.7%	90.3%	84.0%	6.3%
<b>2009</b>	4668	32	4636	<b>2010</b>	446	4190	3859	331	9.6%	90.4%	83.2%	7.1%
<b>2010</b>	4466	41	4425	<b>2011</b>	456	3969	3667	302	10.3%	89.7%	82.9%	6.8%
<b>2011</b>	4389	40	4349	<b>2012</b>	423	3926	3636	290	9.7%	90.3%	83.6%	6.7%
<b>2012</b>	4085	27	4058	<b>2013</b>	423	3635	3312	323	10.4%	89.6%	81.6%	8.0%
<b>2013</b>	3519	26	3493	<b>2014</b>	523	2970	772	2198	15.0%	85.0%	22.1%	62.9%
<b>Avg.</b>	5082	26	5056	<b>Avg.</b>	454	4602	4177	425	9.0%	91.0%	82.6%	8.4%

# Net Impact of 2013 School Consolidation

---

- Of the 3493 continuing students enrolled in the eleven schools consolidated in 2013, 15% did not return to a TUSD school.
- On average, in the three years prior to consolidation, 10% of the continuing students at these eleven schools did not return to a TUSD school.
- Therefore, the net difference in non-returning students before and after consolidation is 5%, or approximately 175 students.

# Net Change in Kindergarten Enrollment for Schools Impacted by Consolidation (20<sup>th</sup> Day 2012-13 vs. 2013-24)

	2012-13	2013-14	N Chg.	% Chg.
<b>District Total</b>	<b>4035</b>	<b>4041</b>	<b>6</b>	<b>0%</b>
Brichta	52	0	-52	
Menlo Park	34	0	-34	
Morgan Maxwell	0	49	49	
Fort Lowell/Townsend	36	0	-36	
Corbett	50	0	-50	
Lyons	38	0	-38	
Schumaker	46	0	-46	
Bloom	40	63	23	58%
Dietz	50	67	17	34%
Erickson	81	105	24	30%
Ford	66	58	-8	-12%
Hollinger	48	60	12	25%
Henry	49	54	5	10%
Hudlow	40	56	16	40%
Kellond	70	79	9	13%
Wheeler	57	101	44	77%
Whitmore	53	55	2	4%
<b>Total</b>	<b>810</b>	<b>747</b>	<b>-63</b>	<b>-8%</b>

# Net Change in Kindergarten Enrollment by School

## (20<sup>th</sup> Day 2012-13 vs. 2013-24)

School	2012-13	2013-14	N Chg.	% Chg.
Hughes	76	43	-33	-43%
Safford Magnet	47	34	-13	-28%
Cavett	56	41	-15	-27%
Maldonado	77	58	-19	-25%
Borton	83	63	-20	-24%
Cragin	68	53	-15	-22%
Vesey	109	86	-23	-21%
Ochoa	38	31	-7	-18%
Myers-Ganoung	67	56	-11	-16%
Sewell	62	52	-10	-16%
Warren	46	39	-7	-15%
Pueblo Gardens	57	49	-8	-14%
Wright	78	69	-9	-12%
Holladay	45	40	-5	-11%
Davidson	59	53	-6	-10%
Gale	72	65	-7	-10%
Borman	120	110	-10	-8%
Tolson	52	49	-3	-6%
Banks	58	55	-3	-5%
Van Buskirk	59	56	-3	-5%
McCorkle	105	104	-1	-1%
Fruchthendler	71	71	0	0%
Carrillo	47	48	1	2%
Steele	54	56	2	4%
Oyama	74	77	3	4%

School	2012-13	2013-14	N Chg.	% Chg.
Roskruge	47	49	2	4%
Robins	70	73	3	4%
SolengTom	67	70	3	4%
Rose	93	98	5	5%
Roberts/Naylor	44	47	3	7%
Johnson	109	117	8	7%
Robison	59	64	5	8%
Tully	68	74	6	9%
Lineweaver	68	77	9	13%
Bonillas	66	75	9	14%
Dunham	36	41	5	14%
White	100	114	14	14%
Marshall	53	61	8	15%
Lynn/Urquides	86	99	13	15%
Grijalva	104	122	18	17%
Miles - E. L. C.	24	29	5	21%
Mission View	38	46	8	21%
Davis	48	60	12	25%
Howell	47	59	12	26%
Miller	85	109	24	28%
Drachman	49	64	15	31%
Fickett	60	81	21	35%
Collier	26	38	12	46%
Blenman	63	100	37	59%
Manzo	35	69	34	97%

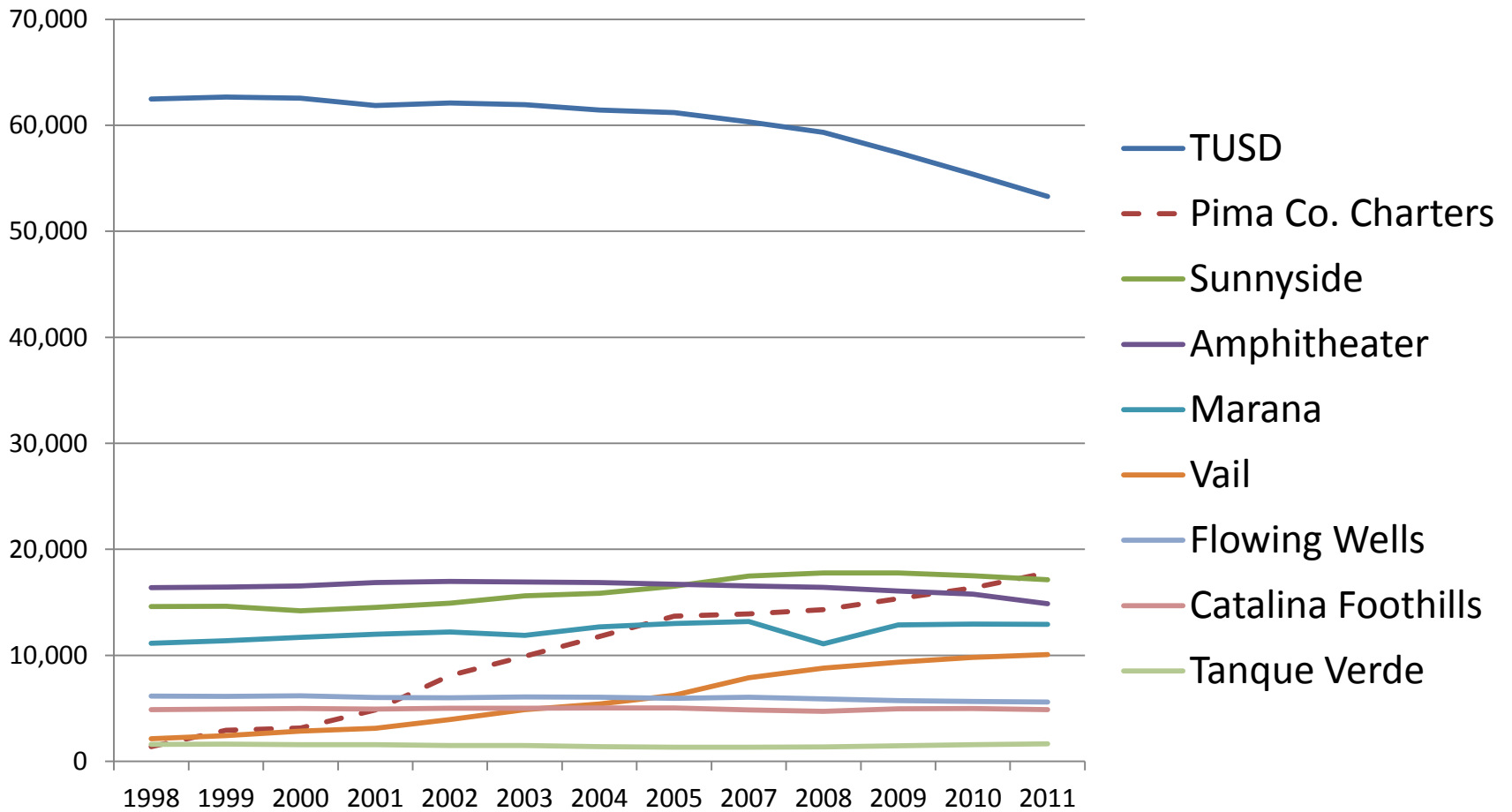
# Charter Schools



## Total Enrollment Transactions by Type – Previous Five Years and Year-to-date

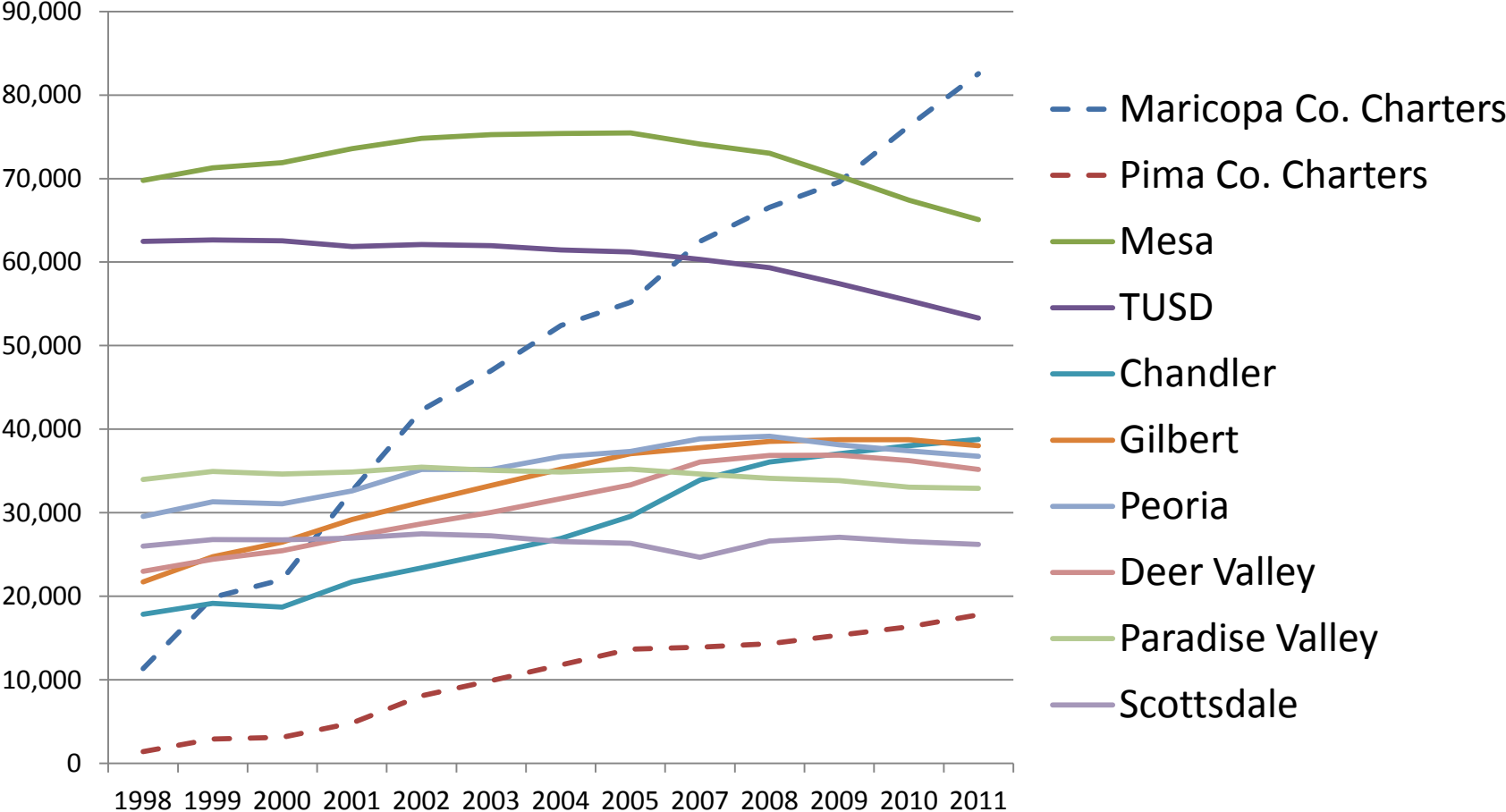
Enrollment Destination	Direction	2009	2010	2011	2012	2013	2014
Graduation Exit	Out	3315	3442	3179	2920	2758	87
Kindergarten Entry	In	4128	4113	3938	3948	4035	3850
No Previous Schooling	In	366	290	253	287	308	226
TUSD School	In	57079	55195	53618	51427	50200	46572
TUSD School	Out	55035	53381	51337	49837	48774	1090
<b>Charter</b>	<b>In</b>	<b>2022</b>	<b>1964</b>	<b>2065</b>	<b>1963</b>	<b>2008</b>	<b>1308</b>
<b>Charter</b>	<b>Out</b>	<b>2238</b>	<b>2179</b>	<b>2051</b>	<b>2153</b>	<b>1900</b>	<b>959</b>
Non-TUSD Public School	In	3785	3472	3277	3416	3402	1547
Non-TUSD Public School	Out	3056	2655	2567	2591	2566	883
Detention Facility	In	14	11	24	14	17	0
Detention Facility	Out	3	5	18	8	14	0
Home School	In	81	74	77	81	85	35
Home School	Out	115	91	98	101	91	29
Private	In	352	332	285	293	268	128
Private	Out	121	105	130	100	77	65
Community Based School	In	35	29	23	25	19	11
Community Based School	Out	36	24	19	10	6	8
Out of State	In	1811	1558	1377	1411	1383	558
Out of State	Out	1546	1432	1434	1162	1370	451
Out of Country	In	794	743	565	553	618	305
Out of Country	Out	583	512	425	365	338	84
Long Term Suspension	In	202	228	232	266	245	3
Long Term Suspension	Out	392	415	325	372	382	8
Other or Unknown	In	796	731	762	694	654	400
Other or Unknown	Out	3243	2911	3071	2893	2905	1795
ADE Verified	Out	67	29	86	379	371	3
W2/S2 - LT Illness	Out	18	9	11	6	8	1
W5/S5 - Dropout	Out	77	101	30	9	5	2
W6/S6 - Aged Out	Out	4	5	4	5	1	2
W8/S8 - Deceased	Out	12	9	9	6	12	1
W10/S10 - Detention	Out	75	44	87	47	43	2
W11/S11 - GED	Out	79	61	63	32	39	8
W12/S12 - Vocational School	Out	3	9	2	2	0	0
Not Coded in Mojave	Out	1447	1321	1550	1380	1582	61
<b>Total Transactions</b>		<b>71465</b>	<b>68740</b>	<b>66496</b>	<b>64378</b>	<b>63242</b>	<b>54943</b>

## Total Enrollment for TUSD, Pima County Charter Schools and Public Districts Bordering on TUSD, by Year (1998-2011)



Source: National Center for Education Statistics

# Total Enrollment for Maricopa and Pima County Charter Schools and the Eight Largest Arizona Public School Districts, by Year (1998-2011)



Source: National Center for Education Statistics

# Change in Enrollment between 2007-08 and 2012-13

## (Arizona Department of Education – October 1<sup>st</sup> Counts)

	2007-08	2012-13	N. Change	% Change
TUSD	59,329	51,262	-8,067	-14%
Amphitheater	16,399	14,229	-2,170	-13%
Catalina Foothills	4,718	5,068	350	7%
Flowing Wells	5,877	5,571	-306	-5%
Marana	13,177	12,353	-824	-6%
Sunnyside	17,706	17,631	-75	0%
Tanque Verde	1,352	1,914	562	42%
Vail	8,472	11,604	3,132	37%
Mesa	73,054	64,892	-8,162	-11%
Pima County	152,811	151,854	-957	-1%
Maricopa County	732,146	701,842	-30,304	-4%
Arizona Total	1,148,448	1,096,040	-52,408	-5%

# Selected Statistics for Pima County Charter Schools by Size/Level

(October 2013)

School Size	Schools		Students		School Size			Avg. Students Per Grade
	N	%	N	%	Smallest	Largest	Average	
Large	8	10%	6,033	33%	556	1010	754	77
Medium (High School)	9	11%	2,820	16%	217	458	313	78
Medium	16	19%	4,386	24%	201	407	274	33
Small (High School)	20	24%	2,098	12%	36	175	104	27
Small	30	36%	2,715	15%	19	196	90	12
<b>Total</b>	<b>83</b>	<b>100%</b>	<b>18,052</b>	<b>100%</b>	<b>19</b>	<b>1010</b>	<b>217</b>	<b>33</b>

# Key Characteristics of Pima County Charter Schools

(October 2013)

---

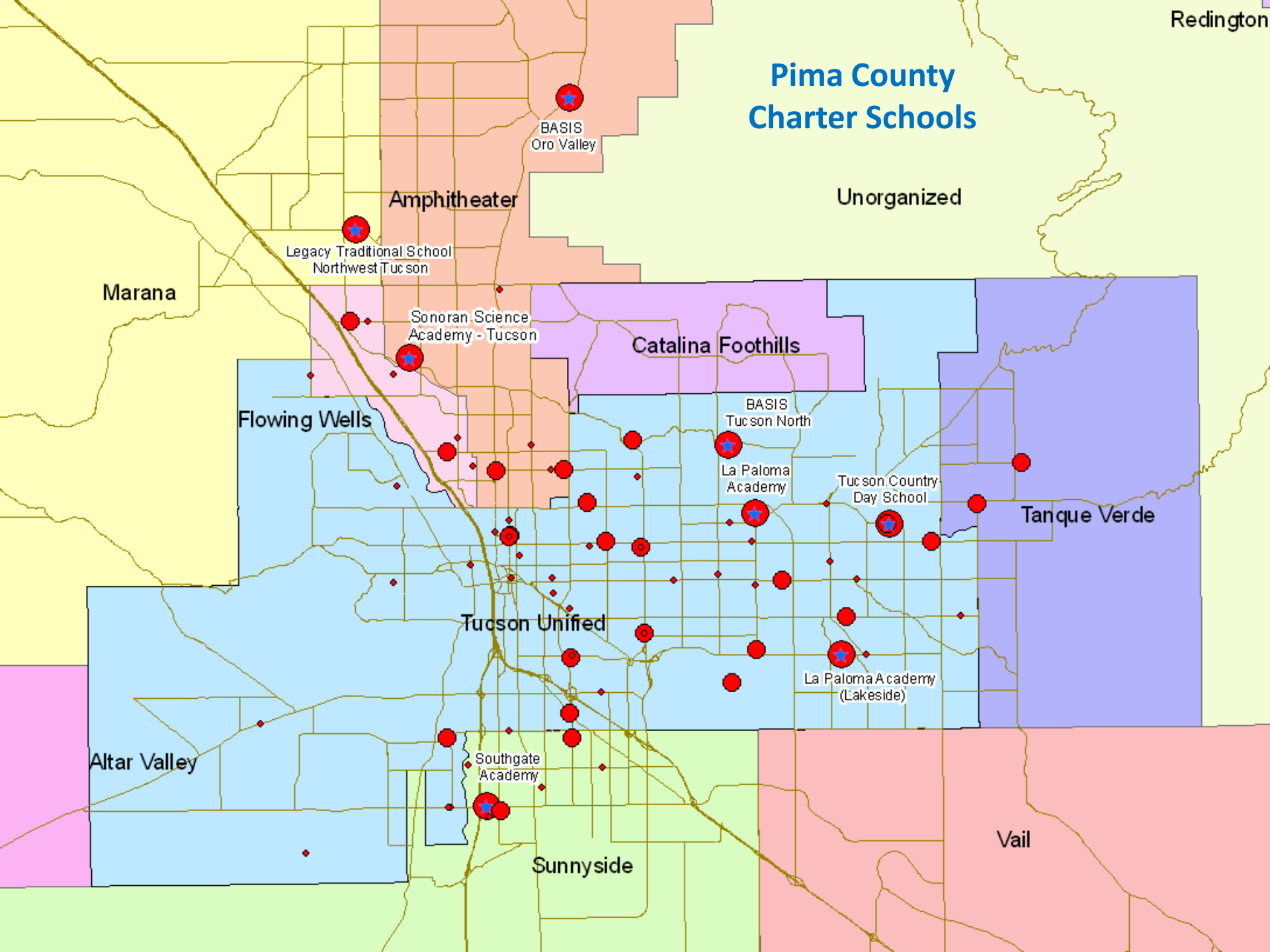
- Among the 83 Pima County Charter schools, eight large schools enroll 33% of the total Charter school population.
- 40% of Charter school students are enrolled in medium sized schools.
- 27% of students are enrolled in small schools.
- 60% of the Pima County Charter school enrollment is concentrated into just two grade level configurations: K-8 and high school

## Number and Percent of Pima County Charter Schools and Students by District where Charter Schools are Physically Located (October 2013)

District Name	Schools		Students	
	N	%	N	%
TUSD	54	65%	11,065	61%
Amphitheater	8	10%	2,356	13%
Continental	1	1%	21	0%
Flowing Wells	6	7%	1,083	6%
Marana	1	1%	1,010	6%
Sahuarita	3	4%	442	2%
Sunnyside	8	10%	1,619	9%
Tanque Verde	2	2%	456	3%
<b>Total</b>	<b>83</b>	<b>100%</b>	<b>18,052</b>	<b>100%</b>

*Source: GIS Mapping of Charter school address reported by the Arizona Department of Education*

# Pima County Charter Schools





# Pima County Charter School Enrollment Trends

According to ADE October 1<sup>st</sup> reports, between 2011-12 and 2012-13:

---

- Total Pima County public school enrollment increased by 681 students (+.45%)
- Pima County Charter school enrollment increased by 753 students (+4%)
- Only 42% of the Pima County Charter schools experienced enrollment growth
- The other 58% lost a total of 811 students
- Among growing Charters, the median increase was just 12 students each

# Pima County Charter School Enrollment Trends

According to ADE October 1<sup>st</sup> reports, between 2011-12 and 2012-13:

---

- Only three charter schools gained a significant number of students
  - Pima Rose Academy grew by 169 students
  - Legacy Traditional School – Northwest Tucson grew by 436 students
  - BASIS Tucson North opened in 2012-13 with an enrollment of 770 students
- However, the mid-town BASIS Tucson campus shrank by -346 students indicating that BASIS transferred half of its mid-town students to the new campus
- Combined, BASIS Tucson and BASIS Tucson North grew by 424 students

# Top 25 Charter Schools - 2013-14 School Year

## Students exiting TUSD for:

Charter School	Total
BASIS Tucson	141
Academy Del Sol	109
Pima Rose Academy	42
La Paloma Academy (Lakeside)	37
Southgate Academy	29
Compass High School	26
La Paloma Academy	23
Tucson Country Day School	22
Arizona Virtual Academy	21
BASIS Tucson North	20
La Paloma Academy - Midtown	18
Edge Charter School - Himmel Park	17
Pima Partnership School, The	16
Canyon Rose Academy	16
PPEP TEC - Celestino Fernandez	15
Eastpointe High School	14
Nosotros Academy	12
Academy of Math and Science	12
Sonoran Science Academy - Broadway	12
Tucson International Academy	11
Presidio School	11
The Griffin Foundation, Inc.	10
Ombudsman - Charter Valencia	10
Skyview High School	9
Adventure School	8

## Students entering TUSD from:

Charter School	Total
La Paloma Academy (Lakeside)	93
La Paloma Academy	73
Pima Rose Academy	58
Wildcat Secondary School	56
TAG Elementary	50
Southgate Academy	46
Tucson Country Day School	43
The Griffin Foundation, Inc.	42
Arizona Virtual Academy	38
Canyon Rose Academy	37
BASIS Tucson North	32
Pima Partnership School, The	31
Tucson International Academy	30
La Paloma Academy – Midtown	29
Sonoran Science Academy – Broadway	24
Compass High School	23
Luz Academy of Tucson	22
BASIS Tucson	21
Academy of Math and Science	20
Primavera Online High School	19
Desert Springs Academy	19
Sonoran Science Academy - Davis Monthan	18
Southside Community School	18
Nosotros Academy	17
Academy of Tucson Middle School	16

# Which TUSD schools were impacted the most by the BASIS Tucson and Academy Del Sol expansions?

## BASIS Tucson

School	Total
Fruchthendler	19
Borton	14
Hughes	12
Lineweaver	11
Bonillas	9
Tully	8
Gale	8
Davis	5
Bloom	4
Borman	4
Howell	4
Robins	4
SolengTom	4
Wheeler	4
Vesey	3
Wright	3
Sewell	3
Miles - E. L. C.	3
Collier	3
White	2
Fickett	2
Henry	2
Pueblo Gardens	2
Van Buskirk	1
Robison	1
University	1
Manzo	1
McCorkle	1
Kellond	1
Drachman	1
Dunham	1
Total	141

## Academy Del Sol

School	Total
Vesey	53
Johnson	14
Lawrence	9
Grijalva	4
Laura N Banks	4
Van Buskirk	3
Myers-Ganoung	3
Bonillas	2
White	2
Oyama	2
Rose	2
Valencia	2
Tully	1
Robison	1
Hudlow	1
Mansfeld	1
Pistor	1
Roskruge	1
Tolson	1
Vail	1
Warren	1
Total	109

Questions?