

Tucson Unified School District

ANALYSIS OF SCHOOL IMPROVEMENT SCHOOL BY SCHOOL

TUSD GOVERNING BOARD MEETING
AUGUST 28, 2012

the journey continues...





**ELEMENTARY / K-8
SCHOOL LEADERSHIP**

**MAGGIE SHAFER
ASST. SUPERINTENDENT**

School Kudos

C to C with Improvement (100 – 119)

School	2011	2012
Blenman	115	117
Booth-Fickett K-8	100	104
Cavett	101	109
Corbett	101	111
Davidson	100	110
Grijalva	106	113

School Kudos

C to C with Improvement

(100 – 119)

School	2011	2012
Lynn-Urquides	105	113
Miles K-8	111	116
Mission View	106	115
Vesey	116	117
Roskruge K-8	110	112

School Kudos

B Schools

(120 – 139)

School		2011	2012
Carrillo	(C to B!)	115	135
Collier	(C to B!)	106	123
Borman		120	134
Drachman		120	124
Dunham	(C to B!)	107	129

School Kudos

B Schools

(120 – 139)

School		2011	2012
Ford	(C to B!)	108	123
Fruchthendler		130	134
Gale		152	136
Hollinger	(C to B!)	119	126
Howell	(C to	115	120

School Kudos

B Schools

(120 – 139)

School		2011	2012
Kellond	(C to B!)	119	122
Lineweaver	(C to B!)	111	130
Robins	(C to B!)	109	129
Sewell		138	122
Tolson	(C to B!)	117	134

School Kudos

B Schools

(120 – 139)

School	2011	2012
Tully	130	121
Wheeler	135	137
White (C to B!)	108	120
Whitmore	142	122
Wright	110	120

School Kudos

A Schools

(140 – 200)

School	2011	2012
Borton	NR	141
Henry	145	150
Hughes (B to A!)	139	146
Rose K-8	142	148
Soleng Tom	146	143

Superintendent's Goal

C Schools

D to C!

(100 – 119)

School	2011	2012
Cragin	97	100
Davis	98	113
Dietz	93	107
Erickson	96	117

Superintendent's Goal

C Schools

D to C!

(100 – 119)

School	2011	2012
Hudlow	97	118
Oyama	90	116
Roberts Naylor K-8	98	117
Steele	87	112
Warren	95	107

Elementary Schools with a Downturn

School	2011 Points	2012 Points	2011	2012
Holladay	120	109	B	C
Marshall	128	108	B	C
Menlo Park	122	116	B	C
Bloom	105	103	C	C
Brichta	107	103	C	C
Miller	116	109	C	C
Myers Ganoung	118	117	C	C
Schumaker	118	112	C	C

Elementary Schools with a Downturn

School	2011 Points	2012 Points	2011	2012
Lyons	104	97	C	D
Maldonado	106	97	C	D
Manzo	81	85	D	D
Robison	99	94	D	D
Johnson	Unrated	85	--	D

K-8 Schools with a Downturn

School	2011 Points	2012 Points	201 1	201 2
Pueblo Gardens	110	103	C	C
Lawrence	115	78	C	D
McCorkle	Unrated	95	--	D

Elementary Schools Cumulative Results

	2011	2012
A's	4	3 + 1 = 4
B's	10	19
C's	29	26
D's	11*	5 + 1 = 6
Unrated	2	A & D

* Of these 11, **8 moved out of D
Classification**

K-8 Schools Cumulative Results

	2011	2012
A's	1	1
B's	0	1
C's	6	5
D's	3	3
Unrated	1	D

Secondary School Leadership

Dr. Abel Morado
Assistant Superintendent

TUSD

Middle Schools

D to D with Improvement (79-99)



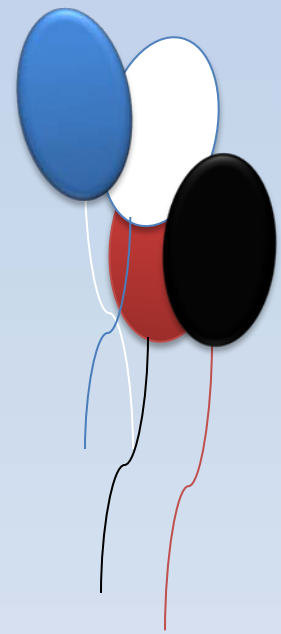
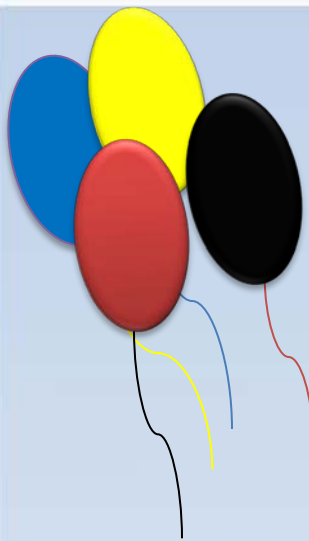
School	2011	2012
Carson Middle School	90	99
Hohokam Middle School	79	83
Maxwell Middle School	79	88
Utterback Middle School	88	89
Valencia Middle School	91	93

A	140 - 200	total points
B	120 - 139	total points
C	100 - 119	total points
D	0 - 99	total points

Middle Schools

D to C

(92-110)



School	2011	2012
Mansfeld Middle School	97	100
Pistor Middle School	93	110
Alice Vail Middle School	99	110
Wakefield Middle School	92	105

CONGRATULATIONS

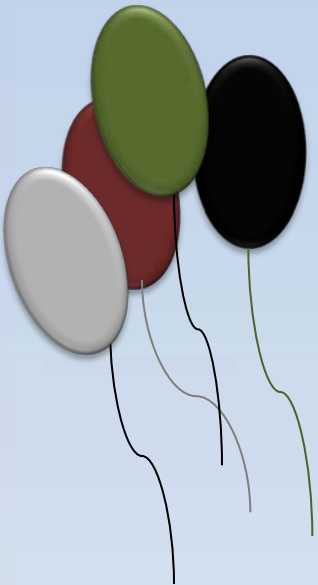
Great job

A	140 - 200	total points
B	120 - 139	total points
C	100 - 119	total points
D	0 - 99	total points

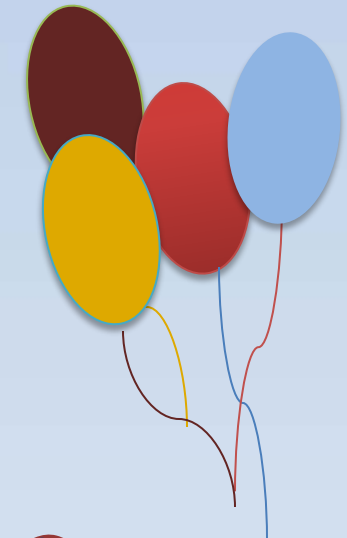
Middle Schools

C to C with Improvement

(102-118)



School	2011	2012
Doolen Middle School	102	115
Gridley Middle School	113	118
Magee Middle School	104	112
Secrist Middle School	109	109



CONGRATULATIONS

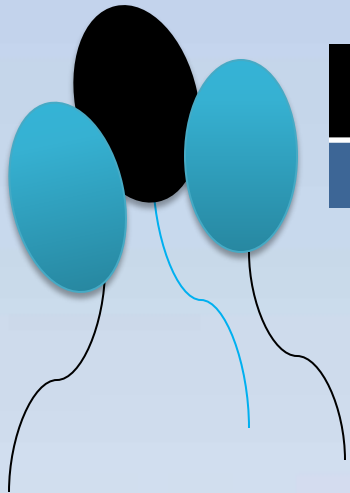
Great job

A	140 - 200	total points
B	120 - 139	total points
C	100 - 119	total points
D	0 - 99	total points

Middle Schools

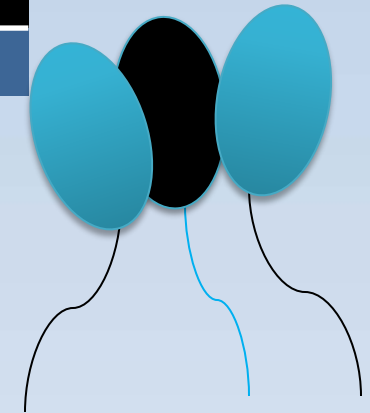
B to A

(135-140)



CONGRATULATIONS

School	2011	2012
Dodge Magnet School	135	140



Great job

A	140 - 200	total points
B	120 - 139	total points
C	100 - 119	total points
D	0 - 99	total points

High Schools

D

(92-62)



	2011	2012
Howenstine HS	80	89
Catalina Magnet HS	92	88
Mary Meredith K-12	*NR	62
Southwest Alternative HS	*NR	75
Distance Learning (AGAVE)	*NR	-

*NR – NOT RATED – These schools were not rated in 2011; 2012 is the first year they are rated.

C to D

(106-99)

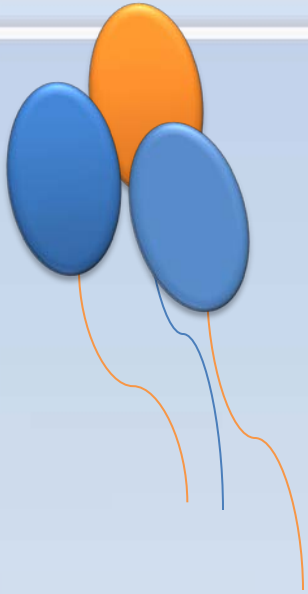
	2011	2012
Pueblo Magnet HS	106	99

A	140 - 200	total points
B	120 - 139	total points
C	100 - 119	total points
D	0 - 99	total points

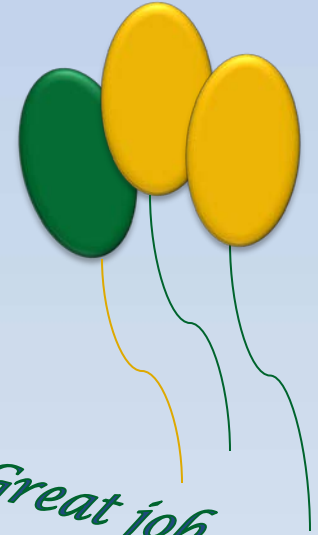
High Schools

D to C

(96-103)



	2011	2012
Cholla Magnet HS	96	103
Santa Rita HS	96	102



CONGRATULATIONS

Great job

A	140 - 200	total points
B	120 - 139	total points
C	100 - 119	total points
D	0 - 99	total points

High Schools

C

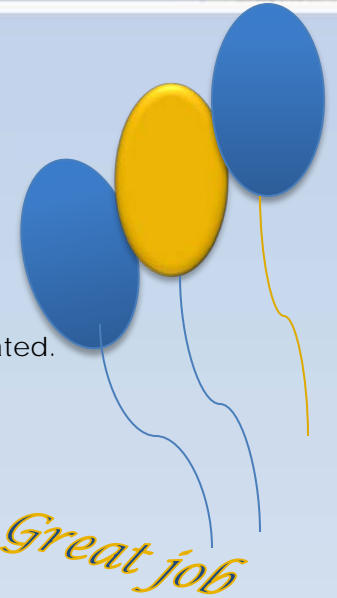
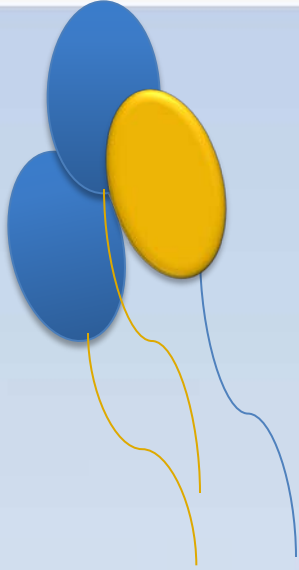
(116-106)



	2011	2012
Rincon HS	116	106
Tucson High Magnet School	115	113

A	140 - 200	total points
B	120 - 139	total points
C	100 - 119	total points
D	0 - 99	total points

High Schools C to B (107-137)



	2011	2012
Palo Verde HS	107	132
Teenage Parent Program TAPP	*NR	135
Project MORE	*NR	137

*NR – NOT RATED – These schools were not rated in 2011; 2012 is the first year they are rated.

CONGRATULATIONS

Great job

A	140 - 200	total points
B	120 - 139	total points
C	100 - 119	total points
D	0 - 99	total points

High Schools A to B (142-139)



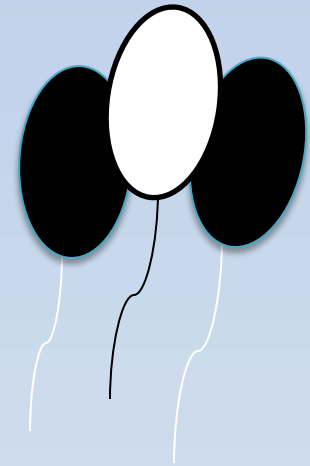
	2011	2012
Sahuaro HS	142	139

A	140 - 200	total points
B	120 - 139	total points
C	100 - 119	total points
D	0 - 99	total points

High Schools A (157-170)



	2011	2012
Sabino HS	157	150
University HS	169	170



CONGRATULATIONS

Great job

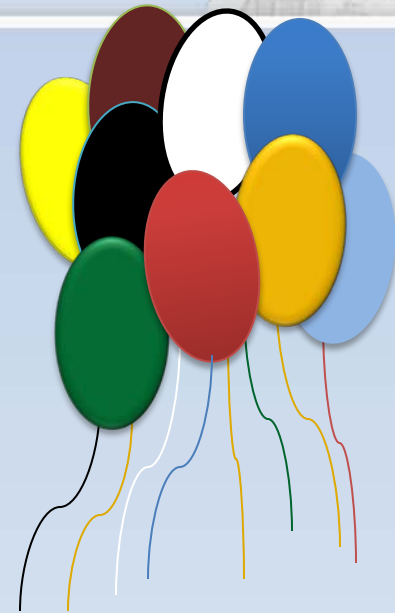
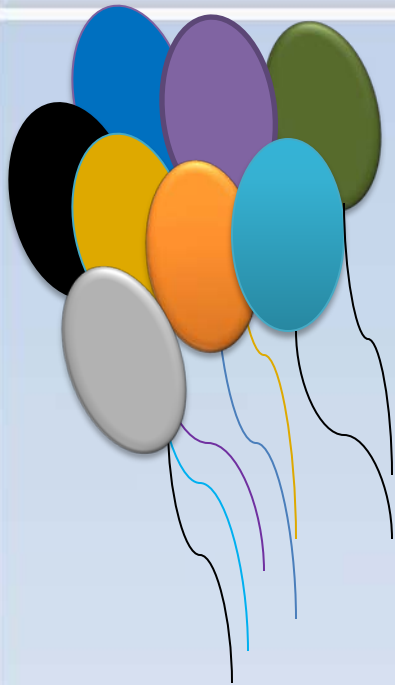
A	140 - 200	total points
B	120 - 139	total points
C	100 - 119	total points
D	0 - 99	total points

Superintendent's Goal

C Schools

D to C!

(92-110)



Middle Schools	2011	2012
Mansfeld Middle School	97	100
Pistor Middle School	93	110
Alice Vail Middle School	99	110
Wakefield Middle School	92	105

(96-103)

High Schools	2011	2012
Cholla Magnet HS	96	103
Santa Rita HS	96	102

A	140 - 200	total points
B	120 - 139	total points
C	100 - 119	total points
D	0 - 99	total points


Secondary Leadership Cumulative Results



Middle Schools	2011	2012
A's	0	1
B's	1	0
C's	4	8
D's	9	5
Unrated	-	-

High Schools	2011	2012
A's	3	2
B's	0	2
C's	4	4
D's	4	3
Alternative	-	D
Unrated	-	D

Plans for Schools with D Label or ADE Focus School



Expectations:

1. Schools will be expected to draft continuous improvement plans on a year to year basis that address direct academic interventions for students.
2. These plans will address the academic needs of students. Schools will identify specific intervention strategies to implement. Schools will have access to ESEA strategies.
3. Schools will address their low achieving subgroup of students.

Support:

1. Provide resources through various funding sources like M/O, Title One and Desegregation.
2. There will be professional development support through the offices of our Deputy Superintendent and Secondary School Leadership.
3. We will provide data to schools to inform practice and to assist schools in identifying students in need, and to guide instructional practice.

Timeline



1. Late September D schools will submit a working copy of their one year plan. This plan will address a needs assessment, data, and will adhere to the ESEA model used in Title One Focus schools.
2. Every grading period, 4.5 weeks, there will be a review of the data and schools will be asked to check on the progress of their students, and to review Professional Development practices. The focus of these meetings is to use the data to inform practice.

Conclusions



1. The Superintendent's goals are clearly defined: We must increase achievement of all of our students. Meeting the learning needs of our most at-risk students is a critical value and we must not fail.
2. There must be a sense of urgency in all schools when it comes to increasing achievement. This is especially important for our 'D' schools.
3. It is a non-negotiable value that educators in our schools must believe all children can learn at high levels, that we hold high expectations of students and that rigor in the curriculum is never in question.