



**Superintendent's Report
August 26, 2014**

Dr. H.T. Sanchez

Then...

Layoffs



School Closures



\$14 Million Deficit



Now...

Eliminated layoff process, put \$1 million to address salary issues, and began the year with fewer vacancies than past years

Arizona Daily Star

TUSD's early hiring efforts prove successful despite vacancies



Subscriptio

TUSD spending changes aim to improve teacher pay, classroom ratios

Re-opened schools for Infant and Early Learning Centers



Strategic Plan passes with a 5-0 vote



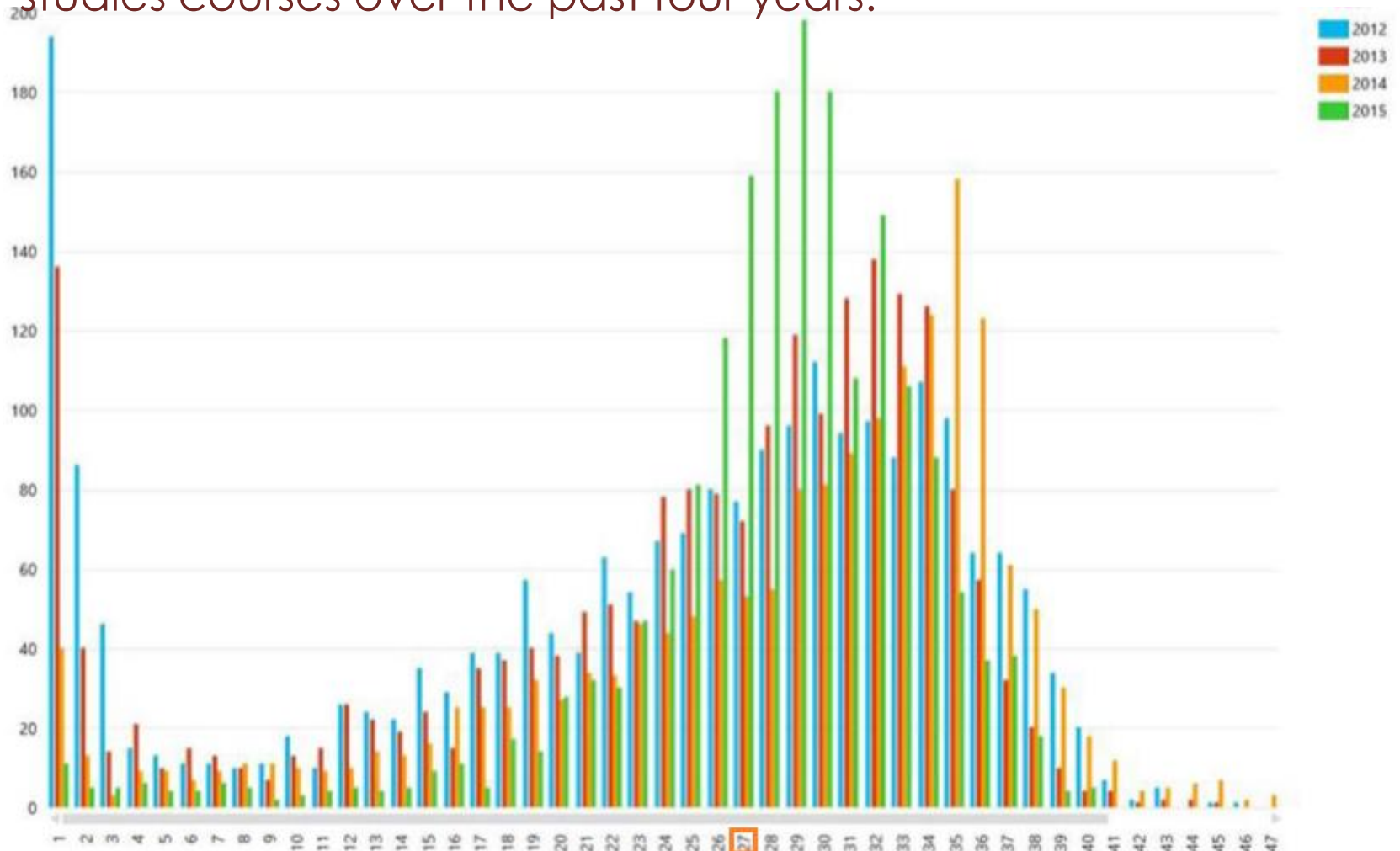
Elementary & Secondary FTE's

ELEMENTARY	
School	FTE's
BLENMAN	Add 1 FTE
BORTON	Add 1 FTE
CRAGIN	Add 1 FTE
HENRY	Add 1 FTE
HUDLOW	Add 1 FTE
NAYLOR	Add 2 FTE's
C.E. ROSE	Add 1 FTE
VESEY	Add 1 FTE
WRIGHT	Add 1 FTE

SECONDARY	
School	FTE's
CATALINA	Add .2 FTE's
CHOLLA	Add 1.8 FTE's
GRIDLEY	Add 1.6 FTE's
PALO VERDE	Add 2.0 FTE's
PUEBLO	Add .8 FTE's
SABINO	Add 7.2 FTE's
SANTA RITA	Add 1.4 FTE's
TUCSON	Add 4.6 FTE's

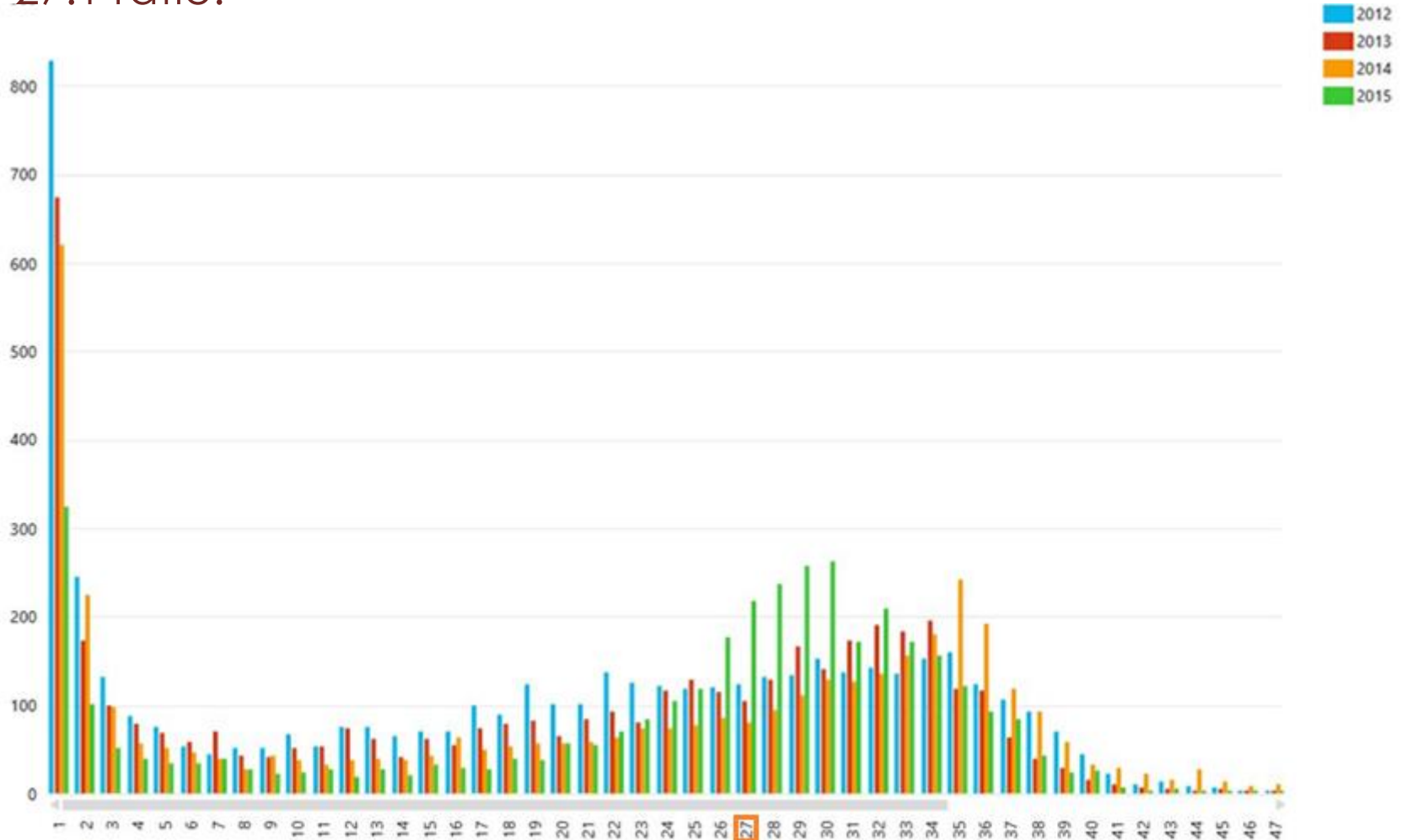
Class Size 2012 to 2015

Students in HS math, language arts, science and social studies courses over the past four years.



Class Size 2012 to 2015

All TUSD HS classes and how they compare, historically, to the 27:1 ratio.



18th Day Minority Enrollment

in TUSD Advanced Placement for SY 2013-14 to 2014-15

	2013-14	2014-15	Change
Advance Placement	1690	1936	+246
Pre-Advanced Placement	3987	4415	+428



Data Dashboard

