

EXHIBIT A

LEGAL DESCRIPTION:

AN EASEMENT FOR ELECTRIC UTILITY PURPOSE LYING WITHIN A PORTION OF BLOCK 3 OF "PALO VERDE ADDITION TO THE CITY OF TUCSON," A SUBDIVISION OF PIMA COUNTY, ARIZONA, ACCORDING TO THE MAP OF RECORD IN THE PIMA COUNTY RECORDER'S OFFICE IN BOOK 3 OF MAPS AND PLATS, AT PAGE 81, ALL OF WHICH IS LOCATED IN A PORTION OF THE NORTHEAST QUARTER OF SECTION 4, TOWNSHIP 14 SOUTH, RANGE 14 EAST, OF THE GILA AND SALT RIVER MERIDIAN, PIMA COUNTY, ARIZONA, MORE PARTICULARLY DESCRIBED AS FOLLOWS:

COMMENCING AT THE CENTER QUARTER CORNER OF SAID SECTION 4, MONUMENTED BY A BRASS CAP IN HANDHOLE, FROM WHICH THE EAST QUARTER CORNER OF SAID SECTION, MONUMENTED BY A BRASS CAP IN HANDHOLE, BEARS NORTH 89°49'52" EAST (BASIS OF BEARING), A DISTANCE OF 2637.41 FEET THEREFROM;
THENCE NORTH 89°49'52" EAST ALONG SAID SOUTH LINE OF SAID NORTHEAST QUARTER OF SAID SECTION, SAID LINE ALSO BEING THE CENTERLINE OF PIMA STREET, A DISTANCE OF 678.24 FEET;
THENCE NORTH 01°10'08" WEST, PERPENDICULAR TO SAID CENTERLINE, A DISTANCE OF 30.00 FEET TO A POINT ON THE NORTH RIGHT OF WAY OF SAID PIMA STREET;
THENCE CONTINUING NORTH 01°10'08" WEST, A DISTANCE OF 120.63 FEET TO **THE POINT OF BEGINNING**;
THENCE SOUTH 89°35'19" WEST, A DISTANCE OF 20.00 FEET;
THENCE NORTH 00°24'41" WEST, A DISTANCE OF 20.00 FEET;
THENCE NORTH 89°35'19" EAST, A DISTANCE OF 20.00 FEET;
THENCE SOUTH 00°24'41" EAST, A DISTANCE OF 20.00 FEET TO **THE POINT OF BEGINNING**.

SAID EASEMENT CONTAINING 400 SQUARE FEET OR 0.0092 ACRES MORE OR LESS.

PREPARED BY OR UNDER THE DIRECTION OF



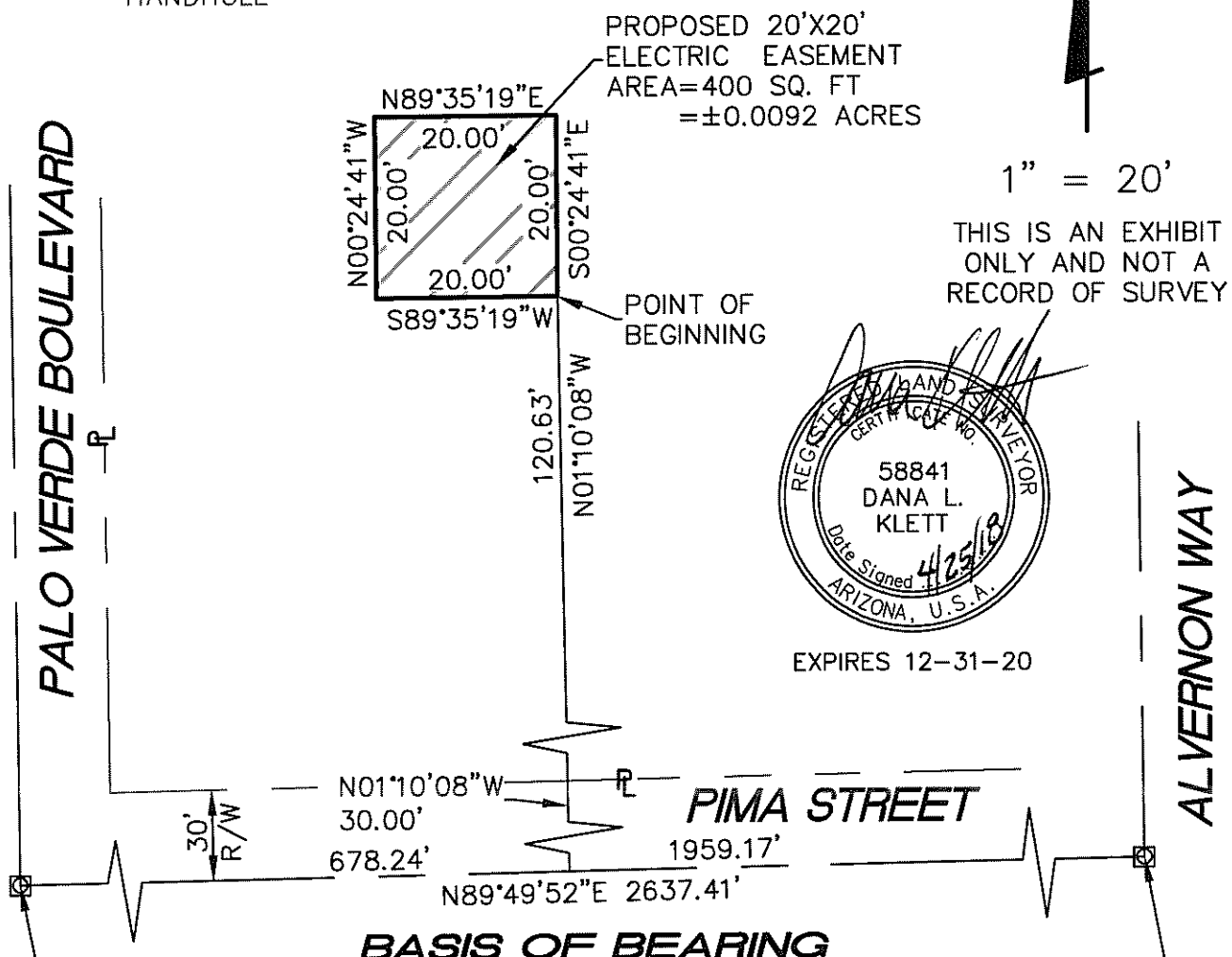
DANA KLETT R.L.S.
ARIZ. REG. NO. 58841
HESS-ROUNTREE INC.
9831 S. 51ST ST., SUITE C110
PHOENIX, AZ 85044
DANAB@HESSROUNTREE.COM

EXHIBIT A

LEGEND

- R/W RIGHT OF WAY
- P.C.R. PIMA COUNTY RECORDER
- A.P.N. ASSESSOR PARCEL NUMBER
- BRASS CAP IN HANDHOLE

CATALINA HIGH SCHOOL
 A.P.N. 122-16-0010
 "PALO VERDE ADDITION TO THE CITY OF TUCSON"
 BOOK 3, PAGE 81
 P.C.R.



PROPOSED 20'X20'
 ELECTRIC EASEMENT
 AREA=400 SQ. FT
 =±0.0092 ACRES

1" = 20'

THIS IS AN EXHIBIT ONLY AND NOT A RECORD OF SURVEY



PALO VERDE BOULEVARD

ALVERNON WAY

PIMA STREET

BASIS OF BEARING

FOUND BRASS CAP IN HANDHOLE. LOCATED AT THE CENTER QUARTER CORNER OF SECTION 4, TOWNSHIP 14 SOUTH, RANGE 14 EAST.
 ~POINT OF COMMENCEMENT.

BRASS CAP IN HANDHOLE. LOCATED AT THE EAST QUARTER CORNER OF SECTION 4, TOWNSHIP 14 SOUTH, RANGE 14 EAST.

17070ESK1.DWG

TITLE: LEGAL DESCRIPTION EXHIBIT
 AN ELECTRIC EASEMENT LOCATED IN A PORTION OF BLOCK 3 OF "PALO VERDE ADDITION TO THE CITY OF TUCSON," A SUBDIVISION OF PIMA COUNTY, ARIZONA, ACCORDING TO THE MAP OF RECORD IN THE PIMA COUNTY RECORDER'S OFFICE IN BOOK 3 OF MAPS AND PLATS, AT PAGE 81.



HESS - ROUNTREE, INC.
 CONSULTING ENGINEERS & LAND SURVEYORS
 9831 SOUTH 51ST STREET, SUITE C110
 PHOENIX, ARIZONA 85044 (480)496-0244

DES.	DRN.	CKD.	JOB NO.
DLK	DLK	DLK	1707-02E

Parcel Map Check Report

Date: 4/25/2018 1:11:04 PM

Parcel Name: 20'X20' TEP EASEMENT
Description: CATALINA HIGH SCHOOL

North: 453,863.7531' East: 1,009,356.0416'

Segment# 1: Line

Course: S89° 35' 19.07"W Length: 20.000'
North: 453,863.6095' East: 1,009,336.0422'

Segment# 2: Line

Course: N0° 24' 40.93"W Length: 20.000'
North: 453,883.6090' East: 1,009,335.8986'

Segment# 3: Line

Course: N89° 35' 19.07"E Length: 20.000'
North: 453,883.7526' East: 1,009,355.8980'

Segment# 4: Line

Course: S0° 24' 40.93"E Length: 20.000'
North: 453,863.7531' East: 1,009,356.0416'

Perimeter: 80.000' Area: 400.00Sq.Ft.
Error Closure: 0.0000 Course: N0° 00' 00.00"E
Error North : 0.00000 East: 0.00000

Precision 1: 80,000,000.000

