



Facilities Master Plan

TUCSON UNIFIED
SCHOOL DISTRICT

Financing Scenario #1

\$180 Million Bond

- \$49 per year for the average home (\$130,000)
- \$4.09 per month

\$180 Million - Facilities Repairs

• Roofing - <i>Recoating & Select Replacements</i>	\$52 Million
• Heating & Cooling - <i>Replace Poorly Functioning Equipment</i>	\$72 Million
• Security - <i>Fencing, Burglar Alarm, Secure Front Entry</i>	\$18 Million
• Special Systems - <i>Fire Alarm, Public Address & Repairs</i>	\$8 Million
• Plumbing - <i>Replace Old Fixtures</i>	\$2 Million
• Doors / Hardware - <i>Replace Worn Hardware & Damaged Doors</i>	\$12 Million
• Playground Equipment / Fields	\$5 Million
• Technology - <i>Power & Access</i>	\$4 Million
• Transportation - <i>Replace Buses</i>	<u>\$7 Million</u>
	\$180 Million





Facilities Master Plan

TUCSON UNIFIED
SCHOOL DISTRICT

Financing Scenario #2

\$180 Million Bond

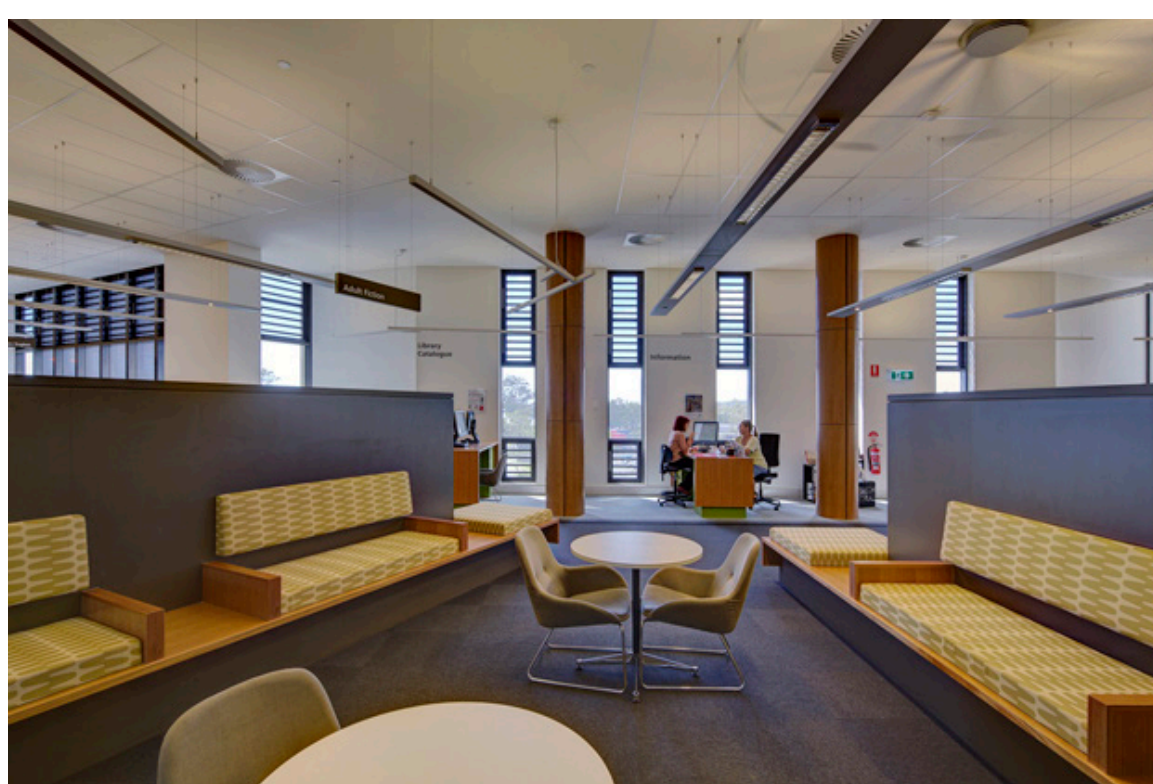
- \$49 per year for the average home (\$130,000)
- \$4.09 per month

\$135 Million - Facilities Repairs

• Roofing - <i>Recoating & Select Replacements</i>	\$46 Million
• Heating & Cooling - <i>Replace Poorly Functioning Equipment</i>	\$64 Million
• Security - <i>Fencing, Burglar Alarm, Secure Front Entry</i>	\$16 Million
• Special Systems - <i>Fire Alarm, Public Address & Repairs</i>	\$3 Million
• Playground Equipment / Fields	\$4 Million
• Transportation - <i>Replace Buses</i>	<u>\$2 Million</u>
	\$135 Million

\$45 Million - Facilities Improvements

• Elementary Schools	
- Student Spaces	\$21 Million
<i>Music Rooms, Science Labs, Project Classrooms</i>	
• Middle School/ K - 8	
- Student Spaces	\$14 Million
<i>Music Rooms, Science Labs, Project Classrooms</i>	
• High School	
- Student Spaces	<u>\$10 Million</u>
<i>Music Rooms, Science Labs, Project Classrooms</i>	
	\$45 Million





Facilities Master Plan

TUCSON UNIFIED
SCHOOL DISTRICT

Financing Scenario #3

\$240 Million Bond

- \$65 per year for the average home (\$130,000)
- \$5.45 per month

\$ 195 Million - Facilities Repairs

• Roofing - <i>Recoating & Select Replacements</i>	\$55 Million
• Heating & Cooling - <i>Replace Poorly Functioning Equipment</i>	\$75 Million
• Security - <i>Fencing, Burglar Alarm, Secure Front Entry</i>	\$23 Million
• Special Systems - <i>Fire Alarm, Public Address & Repairs</i>	\$8 Million
• Plumbing - <i>Replace Old Fixtures</i>	\$2 Million
• Doors / Hardware - <i>Replace Worn Hardware & Damaged Doors</i>	\$12 Million
• Playground Equipment	\$5 Million
• Technology - <i>Power & Access</i>	\$4 Million
• Transportation - <i>Replace Buses & Improve Facilities</i>	\$8 Million
• Electrical - <i>Replace Electrical Service Gear & Panels</i>	\$2 Million
• Track & Field Repairs	<u>\$5 Million</u>
	\$195 Million

\$45 Million - Facilities Improvements

• Elementary Schools	
- Student Space Improvements	\$21 Million
<i>Music Rooms, Science Labs, Project Classrooms</i>	
• Middle School/ K - 8	
- Student Space Improvements	\$14 Million
<i>Music Rooms, Science Labs, Project Classrooms</i>	
• High School	
- Student Space Improvements	<u>\$10 Million</u>
<i>Music Rooms, Science Labs, Project Classrooms</i>	\$45 Million





Facilities Master Plan

TUCSON UNIFIED
SCHOOL DISTRICT

Financing Scenario #4

\$240 Million Bond

- \$65 per year for the average home (\$130,000)
- \$5.45 per month

\$160 Million - Facilities Repairs

• Roofing - <i>Recoating & Select Replacements</i>	\$46 Million
• Heating & Cooling - <i>Replace Poorly Functioning Equipment</i>	\$63 Million
• Security - <i>Fencing, Burglar Alarm, Secure Front Entry</i>	\$18 Million
• Special Systems - <i>Fire Alarm, Public Address & Repairs</i>	\$8 Million
• Plumbing - <i>Replace Old Fixtures</i>	\$2 Million
• Doors / Hardware - <i>Replace Worn Hardware & Damaged Doors</i>	\$9 Million
• Playground Equipment	\$5 Million
• Transportation - <i>Replace Buses & Improve Facilities</i>	\$8 Million
• Electrical - <i>Replace Electrical Service Gear & Panels</i>	<u>\$1 Million</u>
	\$160 Million

\$80 Million - Facilities Improvements

• Elementary Schools	
- Student Spaces - <i>Music Rooms, Science Labs, Project Classrooms</i>	\$21 Million
- Community Spaces - <i>Dining & Library</i>	\$12 Million
• Middle School/ K - 8	
- Student Spaces - <i>Music Rooms, Science Labs, Project Classrooms</i>	\$13 Million
- Community Spaces - <i>Dining & Library</i>	\$12 Million
• High School	
- Student Spaces - <i>Music Rooms, Science Labs, Project Classrooms</i>	\$9 Million
- Community Spaces - <i>Dining & Library</i>	\$10 Million
- Career & Technical Education - <i>Building Systems Corrections</i>	<u>\$3 Million</u>
	\$80 Million





Facilities Master Plan

TUCSON UNIFIED
SCHOOL DISTRICT

Financing Scenario #5

\$300 Million Bond

- \$82 per year for the average home (\$130,000)
- \$6.82 per month

\$200 Million - Facilities Repairs

• Roofing - <i>Recoating & Select Replacements</i>	\$51 Million
• Heating & Cooling - <i>Replace Poorly Functioning Equipment</i>	\$70 Million
• Security - <i>Fencing, Burglar Alarm, Secure Front Entry</i>	\$23 Million
• Special Systems - <i>Fire Alarm, Public Address & Repairs</i>	\$8 Million
• Plumbing - <i>Replace Old Fixtures</i>	\$2 Million
• Doors / Hardware - <i>Replace Worn Hardware & Damaged Doors</i>	\$12 Million
• Playground Equipment	\$5 Million
• Technology - <i>Power & Access</i>	\$7 Million
• Transportation - <i>Replace Buses & Improve Facilities</i>	\$10 Million
• Electrical - <i>Replace Electrical Service Gear & Panels</i>	\$2 Million
• Track & Field Repairs	<u>\$10 Million</u>
	\$200 Million

\$100 Million - Facilities Improvements

• Elementary Schools	
- Student Spaces - <i>Music Rooms, Science Labs, Project Classrooms</i>	\$21 Million
- Community Spaces - <i>Dining & Library</i>	\$25 Million
• Middle School/ K - 8	
- Student Spaces - <i>Music Rooms, Science Labs, Project Classrooms</i>	\$13 Million
- Community Spaces - <i>Dining & Library</i>	\$13 Million
• High School	
- Student Spaces - <i>Music Rooms, Science Labs, Project Classrooms</i>	\$9 Million
- Community Spaces - <i>Dining & Library</i>	\$13 Million
- Career & Technical Education - <i>Building Systems Corrections</i>	<u>\$6 Million</u>
	\$100 Million





Facilities Master Plan

TUCSON UNIFIED
SCHOOL DISTRICT

Financing Scenario #6

\$300 Million Bond

- \$82 per year for the average home (\$130,000)
- \$6.82 per month

\$160 Million - Facilities Repairs

•Roofing - <i>Recoating & Select Replacements</i>	\$46 Million
•Heating & Cooling - <i>Replace Poorly Functioning Equipment</i>	\$63 Million
•Security - <i>Fencing, Burglar Alarm, Secure Front Entry</i>	\$18 Million
•Special Systems - <i>Fire Alarm, Public Address & Repairs</i>	\$8 Million
•Plumbing - <i>Replace Old Fixtures</i>	\$2 Million
•Doors / Hardware - <i>Replace Worn Hardware & Damaged Doors</i>	\$9 Million
•Playground Equipment	\$5 Million
•Transportation - <i>Replace Buses & Improve Facilities</i>	\$8 Million
•Electrical - <i>Replace Electrical Service Gear & Panels</i>	<u>\$1 Million</u>
	\$160 Million

\$140 Million - Facilities Improvements

• Elementary Schools	
- Student Spaces - <i>Music Rooms, Science Labs, Project Classrooms</i>	\$21 Million
- Community Spaces - <i>Dining & Library</i>	\$31 Million
• Middle School/ K - 8	
- Student Spaces - <i>Music Rooms, Science Labs, Project Classrooms</i>	\$13 Million
- Community Spaces - <i>Dining & Library</i>	\$13 Million
- Technology Hub - <i>Collaboration Student Area w/Access to Computers</i>	\$13 Million
- Multi-Use Outdoor Pavilion - <i>Covered Court & Classroom</i>	\$13 Million
• High School	
- Student Spaces - <i>Music Rooms, Science Labs, Project Classrooms</i>	\$9 Million
- Community Spaces - <i>Dining & Library</i>	\$10 Million
- Career & Technical Education - <i>Building Systems Corrections</i>	\$5 Million
- Technology Hub - <i>Collaboration Student Area w/Access to Computers</i>	<u>\$12 Million</u>
	\$140 Million

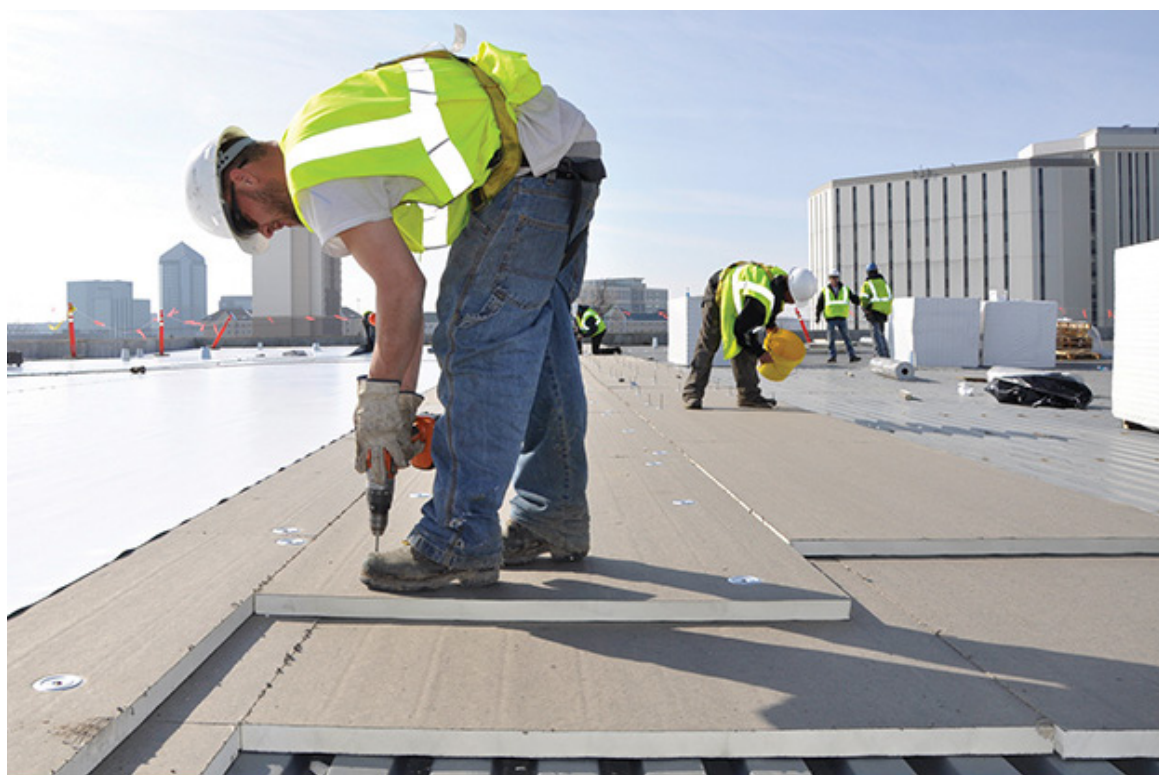


TABLE OF CONTENTS

SECTION I INTRODUCTION AND TABLE OF CONTENTS

SECTION 1.0 GOALS/PROCESS

1.1 Goals	Page 1.0-1
1.2 Process	Page 1.0-4

SECTION 2.0 EXISTING AND PROJECTED CONDITIONS

2.1 Area Characteristics	Page 2.0-1
2.2 Sites/Facilities	Page 2.0-5
2.3 District Growth	Page 2.0-12
2.4 Enrollment	Page 2.0-13
2.5 Capacity Process	Page 2.0-17

SECTION 3.0 TOTAL CAPITAL IMPROVEMENT NEEDS

3.1 Capital Improvement Plan Goals	Page 3.0-1
3.2 Total Capital Needs Identified by the District	Page 3.0-X
3.3 Prioritization Process	Page 3.0-X
3.4 Capital Plan	Page 3.0-X

SECTION 4.0 FACILITIES ASSESSMENTS AND CONDITIONS

4.1 Multi-year Facilities Plan Background and Summary	Page 4.0-1
---	------------

APPENDIX A TECHNOLOGY PLAN (NOT YET COMPLETE)

APPENDIX B DEMOGRAPHIC AND ENROLLMENT ANALYSIS

APPENDIX C FUNDING DATA

APPENDIX D FACILITIES ASSESSMENT DOCUMENTATION

APPENDIX E SUMMARY REPORTS OF PUBLIC PROCESS