

Tucson Unified School District Demographic & Enrollment Analysis

Governing Board Presentation
March 25, 2014

Demographic Study
And
Planning Materials

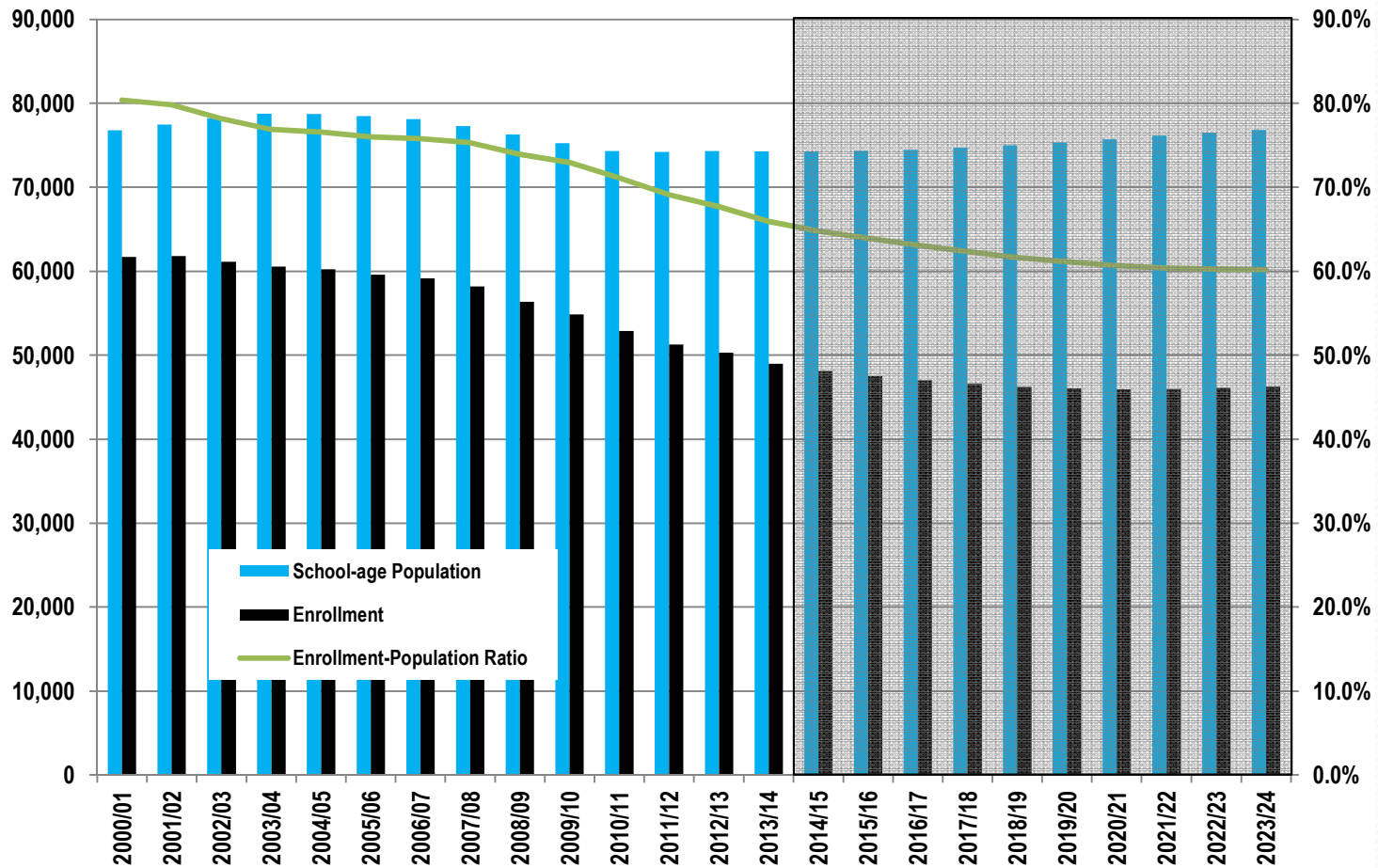


Presentation Outline

- Review of Demographic and Enrollment Study
 - District enrollment trends
 - Student profile
 - Residential development potential
 - District and sub-district enrollment forecasts
- Presentation of Planning Materials
 - Facility and enrollment database
 - Key facility characteristics maps

Enrollment Trends

School-age Population and Enrollment Trends



- ❖ District enrollment has been declining steadily while the total school age population has remained fairly stable
- ❖ The ratio between TUSD enrollment and the school-age population (persons age 5 to 17) is falling, now down to just 67%