

School Master Plan

Committees and Meetings

REGION	CLOSURES	POTENTIAL RECEIVING SCHOOLS	BOUNDARY COMMITTEE MEETINGS	REGIONAL PUBLIC MEETINGS
CENTRAL-WEST	Wakefield Middle	New K-8 at Hollinger with Van Buskirk as a K-5 Option	January 14 6:30-8:30 pm Maxwell Middle School 2802 W. Anklam Rd in the library	January 22 nd 6:30-8:30 pm Menlo Park Elementary 1100 W. Fresno in the cafeteria/MPR room
	Hohokam Middle	Valencia Middle		
	Maxwell Middle Menlo Park Elementary Brichta Elementary	Mansfeld Middle, Safford Middle & Valencia Middle; new K-8(former Maxwell) and Robins as k-8 options New K-8 at Maxwell; Tolson as a k-5 option New K-8 at Maxwell with Tolson as a k-5 option	January 31 6:30-8:30 pm Maxwell Middle School 2802 W. Anklam Rd in the library	January 28 th 6:30-8:30 pm Wakefield Middle School 101 W. 44 th St in the cafeteria/MPR room
NORTH	Howenstine High	Distribute to home high schools	January 16 6:30-8:30 pm Townsend Middle School 2120 N. Beverly Blvd in the library	January 23 rd 6:30-8:30 pm Howenstine High School 555 S. Tucson Blvd in the cafeteria/MPR room
	Ft Lowell/Townsend K-8	Whitmore Elementary and Doolen Middle & Magee Middle		
	Schumaker Elementary	Bloom Elementary & Henry Elementary	February 4 6:30-8:30 pm Townsend Middle School 2120 N. Beverly Blvd in the library	January 26 th 10:00 am-noon Townsend Middle School 2120 N. Beverly Blvd in the cafeteria/MPR room
SOUTHEAST	Corbett Elementary	Wheeler Elementary with Gate Program to Kellond	January 17 6:30-8:30 pm Carson Middle School 7777 E. Stella Rd in the library	January 24 th 6:30-8:30 pm Corbett Elementary School 5949 E. 29 th St in the cafeteria/MPR room
	Lyons Elementary	Erickson Elementary & Ford Elementary		
	Carson Middle	Secrist Middle; Dietz as a k-8 option	February 5 6:30-8:30 pm Carson Middle School 7777 E. Stella Rd in the library	January 30 th 6:30-8:30 pm Carson Middle School 7777 E. Stella Rd in the cafeteria/MPR room

Regional Public Meetings

- School Master Plan Project Update
- Next Steps
- Boundary Committee Member Responsibilities
- Show and Discuss Proposed Boundary Changes
- Go over the Transition Project
 - Issues/special Considerations for Your School
 - Project Managers
- Discuss Public Surveys

Proposed Boundary Changes

Unitary Status Plan Boundary Considerations

- current and projected enrollment
- capacity
- compactness of the attendance area
- physical barriers
- demographics (i.e., race, ethnicity, growth projections, socioeconomic status)
- effects on school integration

Policy JC Boundary Considerations

- Current and Projected Enrollment
- School Building Capacities
- Student Transportation
- Feeder patterns to Middle Schools
- Current and Planned Instructional Programs
- Natural and legal Parameters such as:
 - Neighborhood boundaries
 - Natural
 - Current and future subdivision growth
 - Ethnic mix

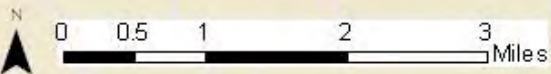
Hohokam Middle School

Valencia
Boundary Area

VALENCIA

priority placement for 6-8
open enrollment at
Lawrence for Lawrence
Area Students

To Valencia
(Hohokam)

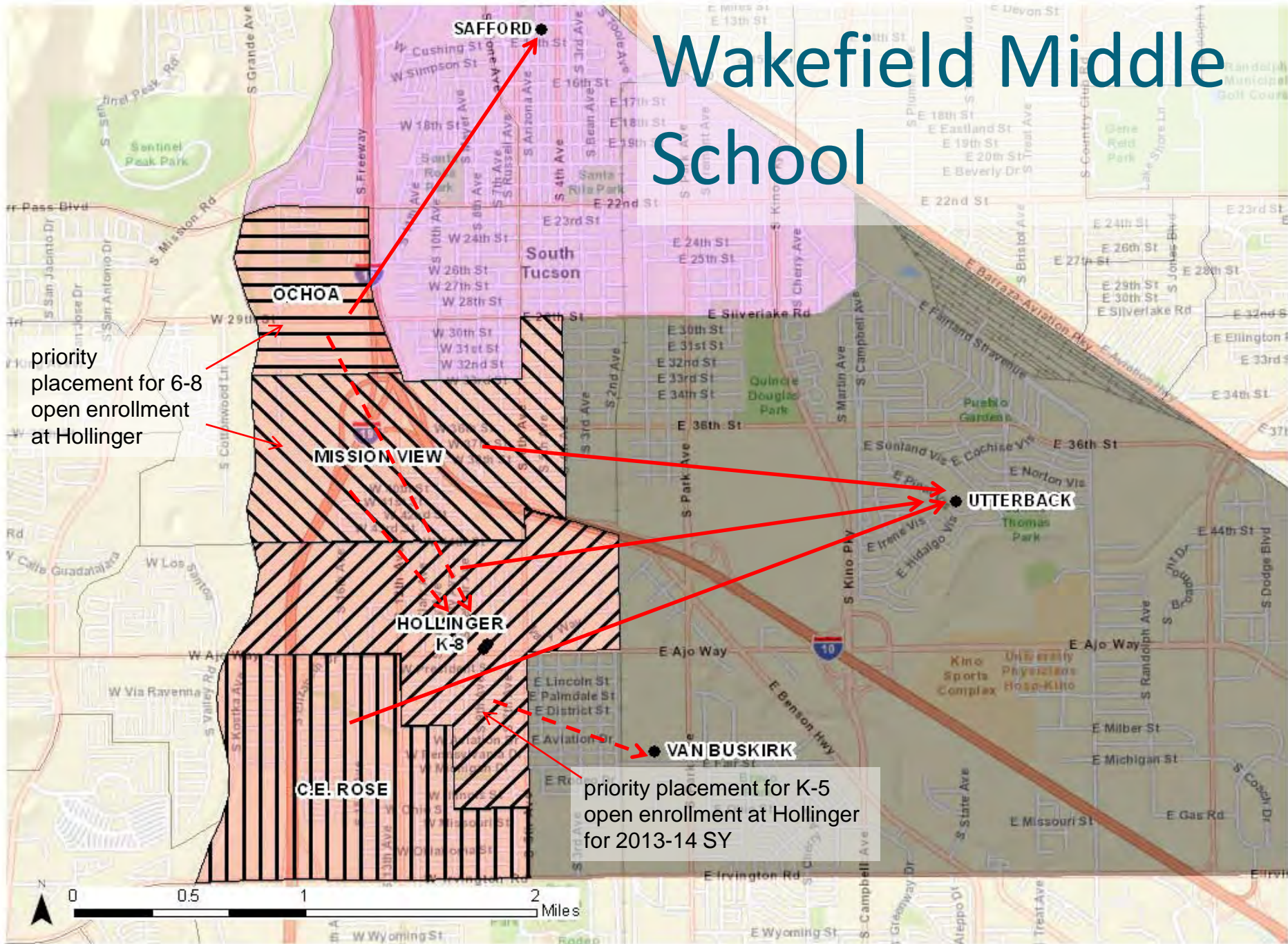


Hohokam Middle School

Criteria/Conditions	Hohokam 6-8	Valencia 6-8
2012/2013 Enrollment (Utilization)	294 (42%)	674 (63%)
Facility Capacity (with portables)	700 (775)	1075
Distributed Students	-294	+340*
New Enrollment (Utilization)	0	1010 (94%)

* Includes 50 students from the Maxwell closure

Wakefield Middle School



Wakefield Middle School

Criteria/Conditions	Wakefield 6-8	Hollinger to K-8	Van Buskirk K-5	Utterback 6-8	Safford 6-8
2012/2013 Enrollment (Utilization)	427 (70%)	410 (49%)	397 (78%)	683	888
Facility Capacity (with portables)	610 (610)	830 (905)	510 (610)	880 (1000)	980 (980)
Distributed Students	-427*	+280	+30	+80**	<10
New Enrollment (Utilization)	0	690 (83%)	430 (84%)	760 (86%)	940*** (96%)

* 160 open enrollment

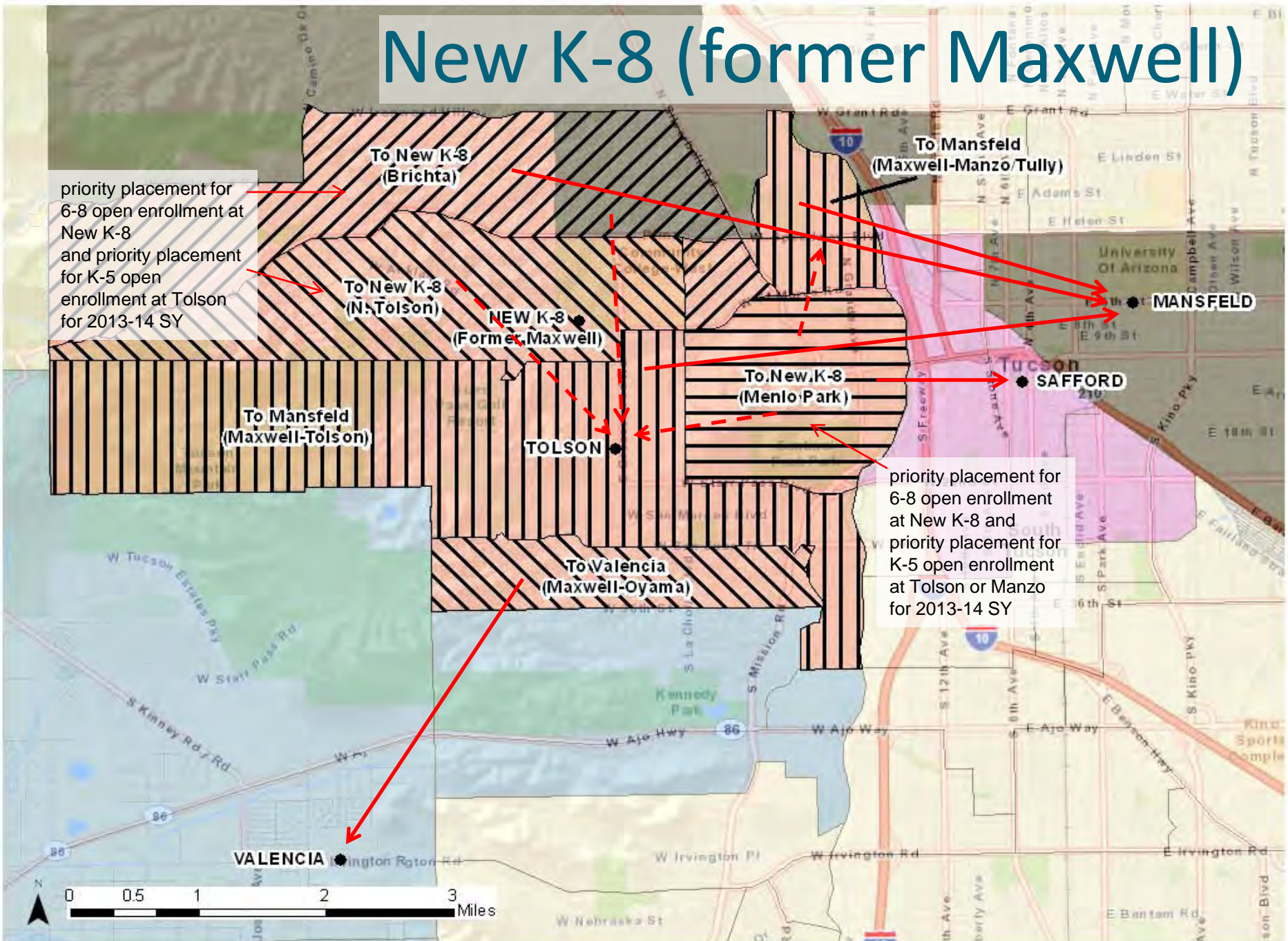
** 210 in the first year until Hollinger is a full K-8

*** includes students from the Maxwell closure

New K-8 (former Maxwell)

priority placement for 6-8 open enrollment at New K-8 and priority placement for K-5 open enrollment at Tolson for 2013-14 SY

priority placement for 6-8 open enrollment at New K-8 and priority placement for K-5 open enrollment at Tolson or Manzo for 2013-14 SY



Maxwell-Brichta-Menlo Park K-8

Criteria/Conditions	Maxwell K-8	Brichta K-5	Menlo Park K-5
2012/2013 Enrollment (Utilization)	298 (46%)	348 (97%)	246 (66%)
Facility Capacity (with portables)	650 (675)	360 (485)	375 (525)
Distributed Students	-298	-348	-246
New Enrollment (Utilization)	0	0	0

Criteria/Conditions	New K-8	Mansfeld 6-8	Safford K-8	Valencia 6-8	Manzo* K-5	Tolson* K-5
2012/2013 Enrollment (Utilization)		680 (84%)	888 (91%)	674 (63%)	260 (71%)	376 (65%)
Facility Capacity (with portables)	650 (675)	810	980	1075	370 (420)	580 (630)
Distributed Students	+600	+100**	+50	+340***	+60	+80
New Enrollment (Utilization)	600 (92%)	780 (96%)	940 (96%)	1010 (94%)	320 (86%)	470 (81%)

* By open enrollment, primarily from the Menlo Park Area

** There are actually about 160 students added to Mansfeld so open enrollment will need to be reduced from an average of 60 6th graders to 40. Mansfeld enrollment will settle at about 700 (86% utilization) depending on future open enrollment levels.

*** Includes 290 students from the Hohokam closure

Schumaker Elementary

**Bloom
Boundary Area**

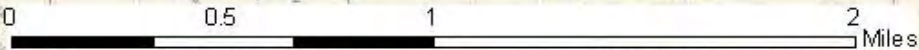
BLOOM

**Henry
Boundary Area**

**To Bloom
(Schumaker)**

**To Henry
(Schumaker)**

HENRY

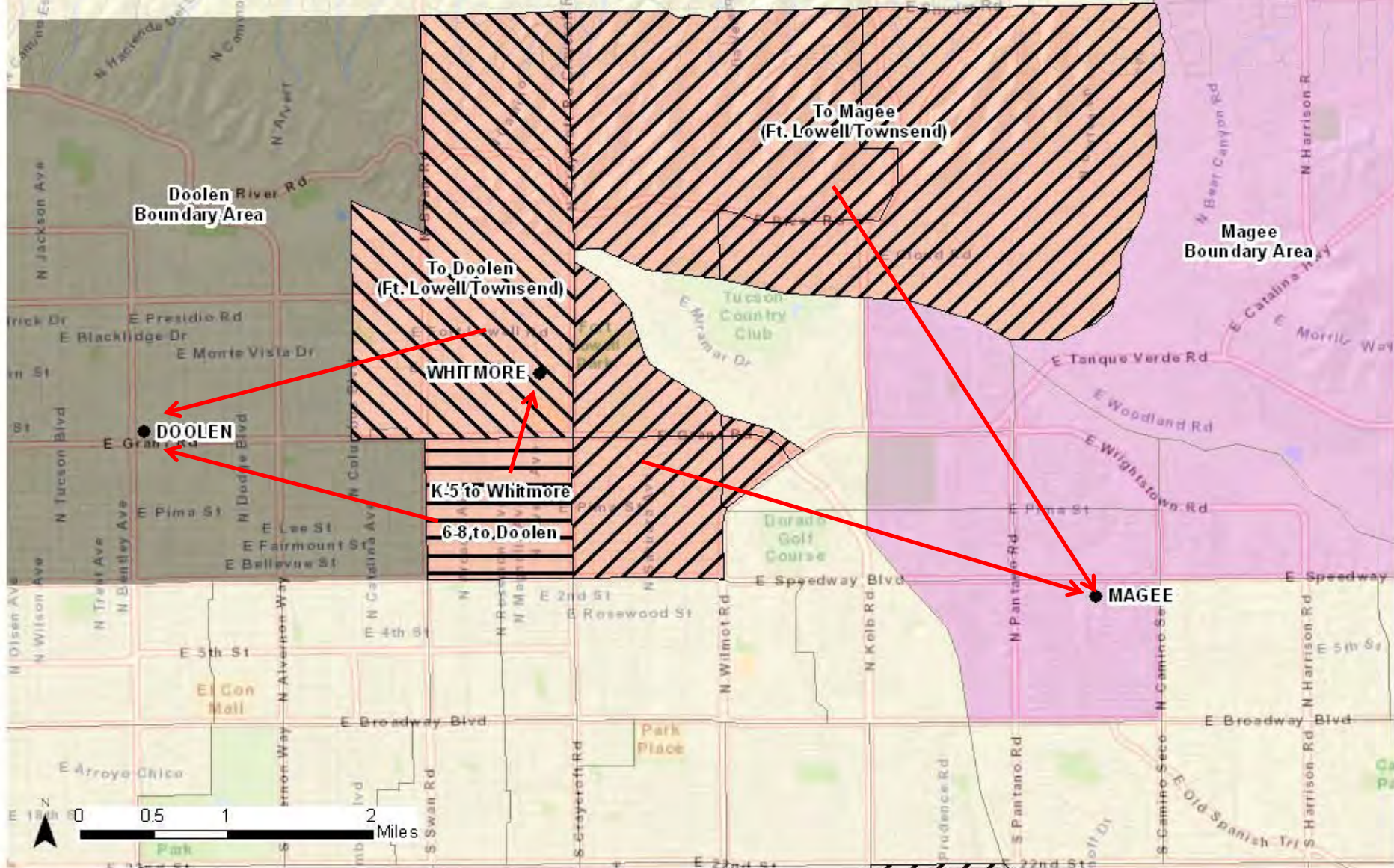


Schumaker Elementary

Criteria/Conditions	Schumaker K-5	Bloom K-5	Henry K-5
2012/2013 Enrollment (Utilization)	336 (82%)	285 (57%)	314 (71%)
Facility Capacity (with portables)	410	500 (575)	440 (490)
Distributed Students	-336	+170*	+80*
New Enrollment (Utilization)	0	450 (90%)	400 (90%)

- * There are 130 non-neighborhood students in Schumaker; not all will go to the receiving schools and the Explorer program will go to Howell.

Ft. Lowell/Townsend K-8



Ft. Lowell/Townsend K-8

Criteria/Conditions	Fort Lowell/Townsend K-8	Whitmore K-5	Doolen 6-8	Magee 6-8
2012/2013 Enrollment (Utilization)	480 (74%)	314 (81%)	656 (58%)	645 (90%)
Facility Capacity (with portables)	650	390 (465)	1140	720 (870)
Distributed Students	-480	+130*	+160	+70
New Enrollment (Utilization)	0	440 (113%)**	820 (72%)	705 (98%)

* Although there are 190 students in the Fort Lowell-Townsend K-5 grades, only 80 are from the neighborhood.

** The bond program will be replacing the 3 portables at Whitmore with a 4-room modular which will raise the capacity to 490 for a utilization of 90%.

*** 150 middle school students at Fort Lowell-Townsend are non-neighborhood; 70-80 are expected to attend Doolen, 10-20 Magee.

Corbett Elementary School

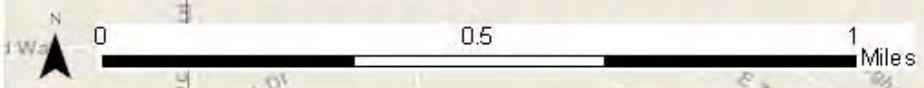
KELLOND

GATE to Kellond

Wheeler
Boundary Area

To Wheeler
(Corbett)

WHEELER

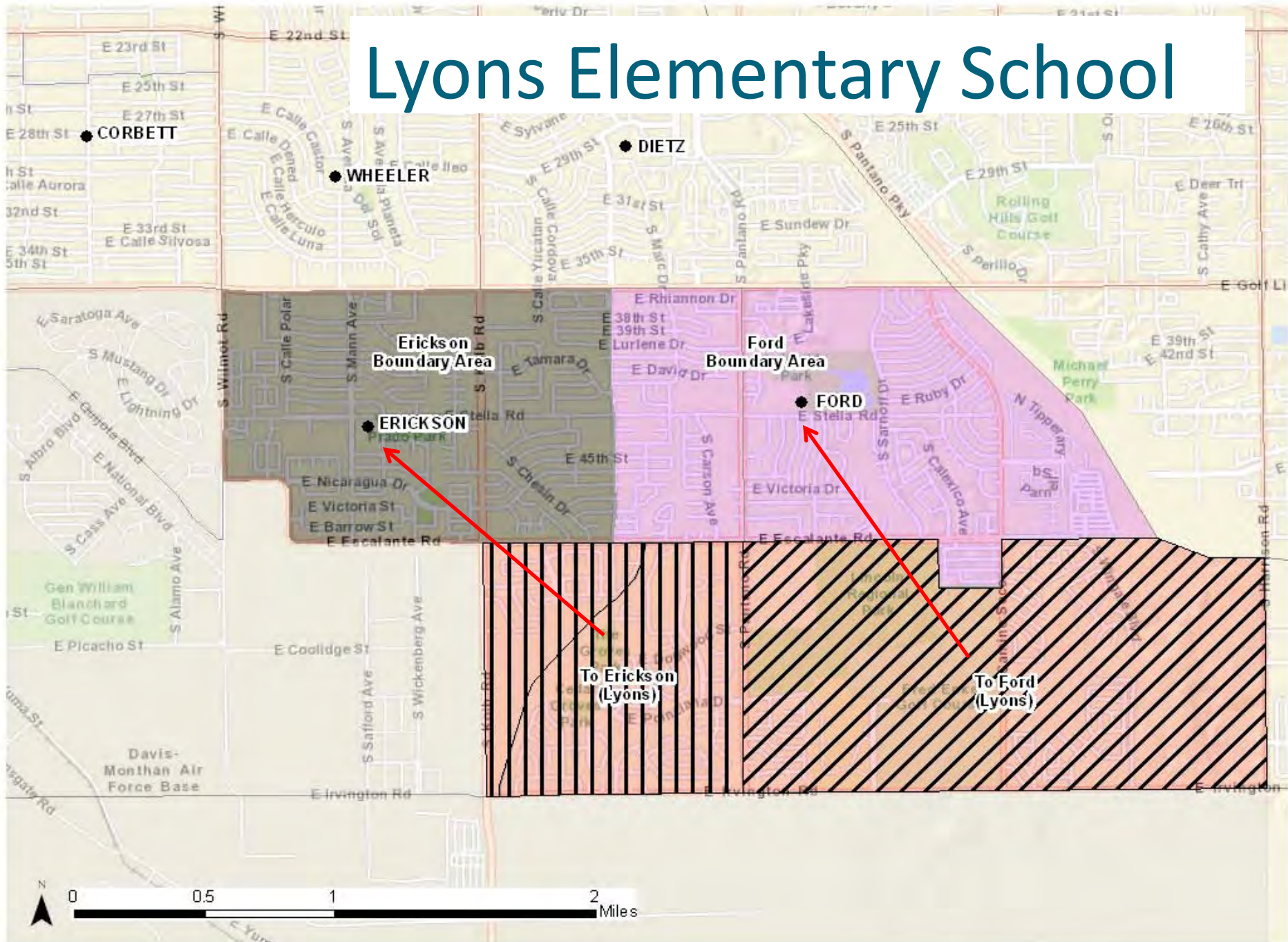


Corbett Elementary School

Criteria/Conditions	Corbett K-5	Kellond K-5	Wheeler K-5
2012/2013 Enrollment (Utilization)	427 (70%)	408 (59%)	332 (55%)
Facility Capacity (with portables)	700	690	600
Distributed Students	-427	+130*	+260
New Enrollment (Utilization)	0	540 (78%)	590 (98%)**

- * The additional students at Kellond include GATE students and siblings.
- ** The long-term projections for Wheeler indicate an enrollment of 530 (88% utilization).

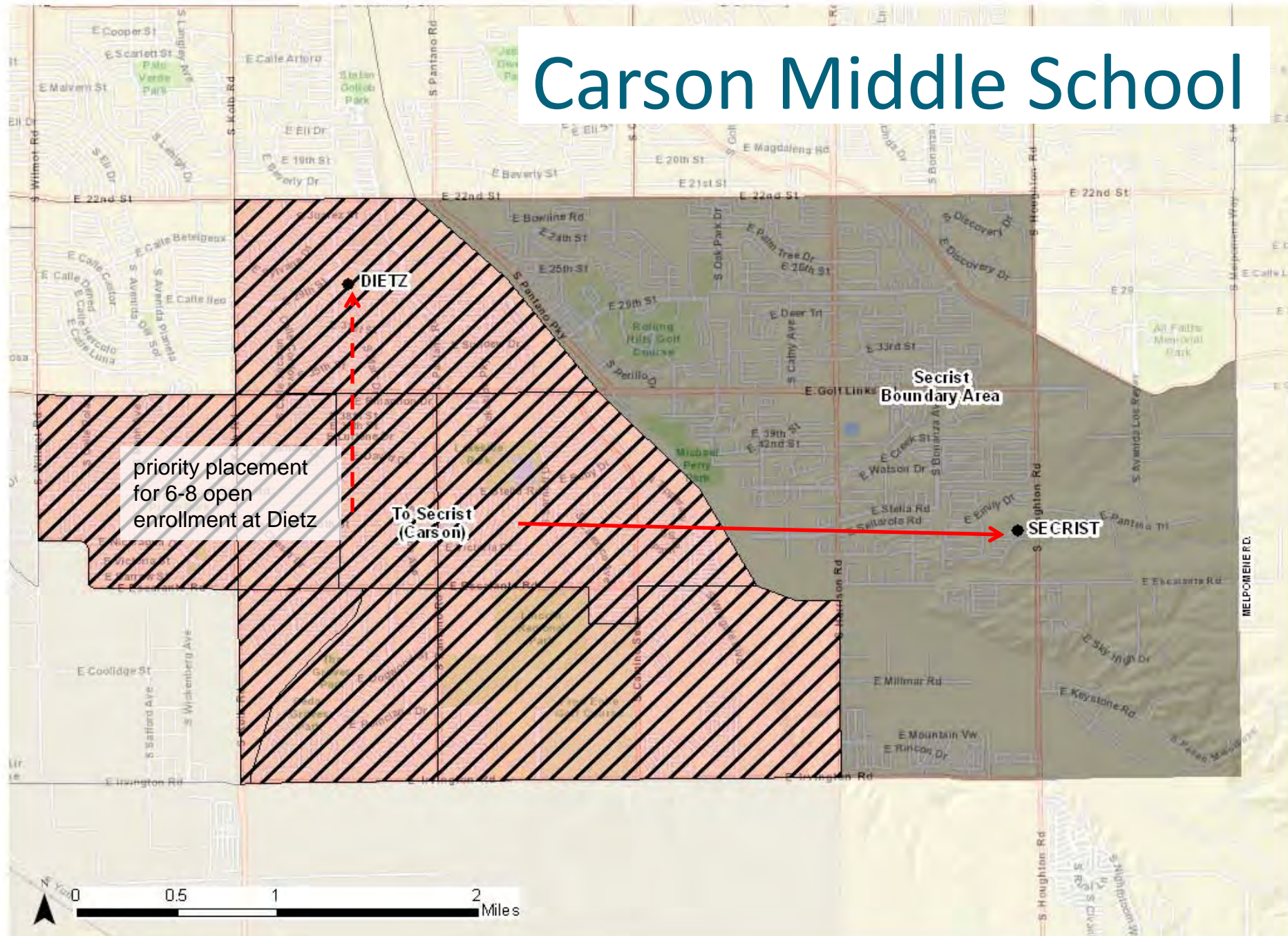
Lyons Elementary School



Lyons Elementary School

Criteria/Conditions	Lyons K-5	Erickson K-5	Ford K-5
2012/2013 Enrollment (Utilization)	277 (71%)	487 (71%)	380 (75%)
Facility Capacity (with portables)	470 (520)	690	510
Distributed Students	-277	+160	+70
New Enrollment (Utilization)	0	650 (94%)	450 (88%)

Carson Middle School



priority placement
for 6-8 open
enrollment at Dietz

To Secrist
(Carson)

Secrist
Boundary Area

SECRIST



Carson Middle School

Criteria/Conditions	Carson 6-8	Secrist 6-8	Dietz to K-8
2012/2013 Enrollment (Utilization)	455 (55%)	369 (57%)	347 (67%)
Facility Capacity (with portables)	830	650	520 (570)
Distributed Students	-455	+250*	+150*
New Enrollment (Utilization)	0	620 (95%)	500 (96%)

* After Dietz is a full K-8. In the first year Dietz will receive 50 additional students; Secrist 340.