

Fruchthendler Adds a Sixth Grade; Sabino Adds Seventh and Eighth

Fruchthendler Impacts

The change would add approximately 40 to 50 students to Fruchthendler, resulting in 2 small classes or 1 class and a combo class. The projected change could increase to 55 students if the option successfully attracts students to stay in TUSD schools. The school has two resource rooms (speech, testing, GATE, and ELD), two portables and a computer room so it could absorb two additional classes.

Sabino HS Impacts

The change could add 120 students to Sabino. Most of those students (80 to 100) would transition from the 6th grade at Fruchthendler. The goal would be to add more students (up to 330 total) by recruiting students who don't now attend TUSD schools (see the Notes section below). Sabino has capacity to accept over 300 additional students in a separate, junior-high-school campus.

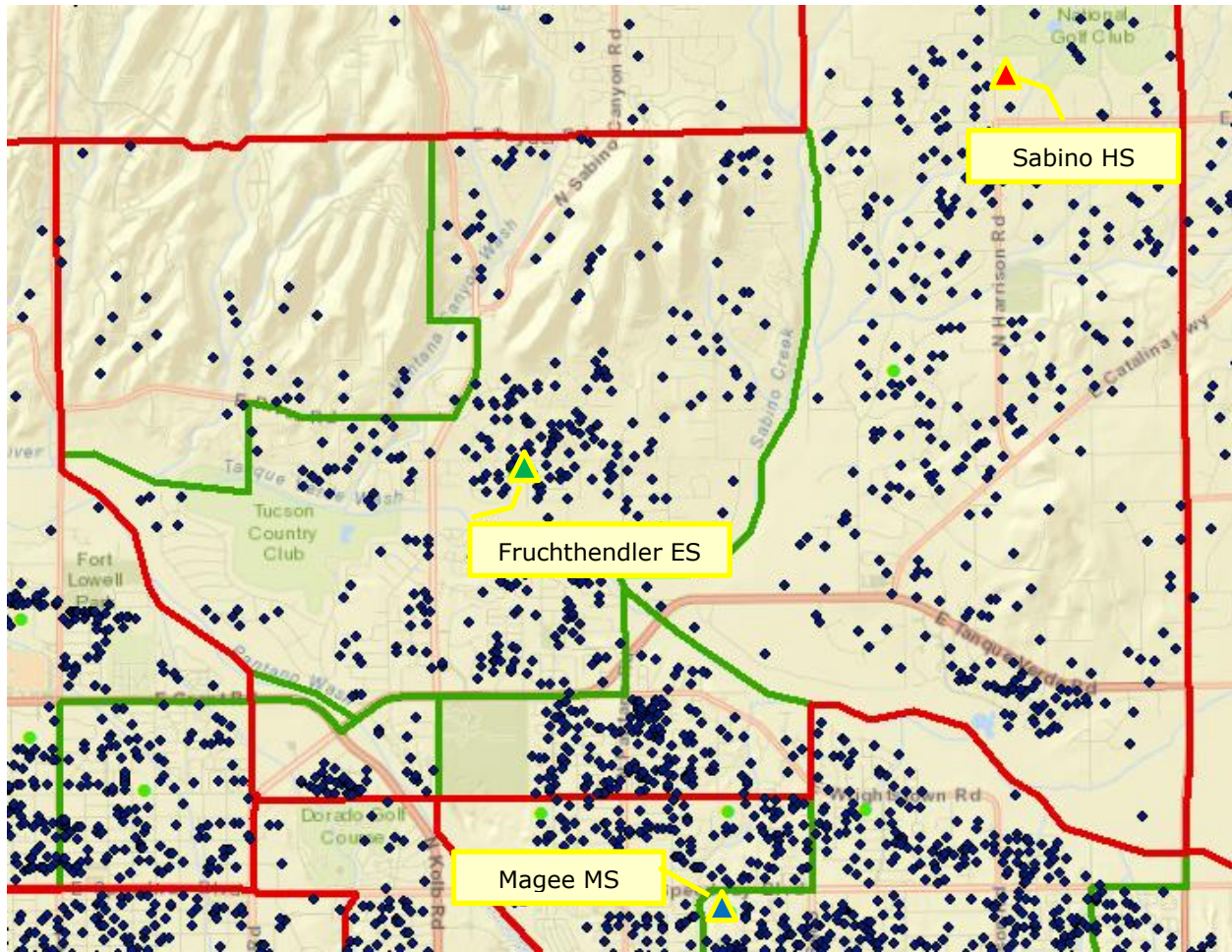
Magee MS Impacts

The change would, at most, reduce the enrollment of Magee by 30 students. Of the 55-60 students in the Fruchthendler 5th grade, approximately 10 transition into the Magee 6th grade, most of the rest attend non-TUSD schools.

The impacts on other schools are expected to be minimal (less than a few students).

Map of the Area

The following shows the Sabino Area, outlined in red, and within it, the Fruchthendler Area, in green. The blue diamonds are TUSD students, which indicate student densities in the area. The Fruchthendler K-5 Area is wholly within the Sabino HS Area. The Sabino HS Area also includes the Collier K-5 Area and portions of Bloom, Hudlow, and Whitmore. At the middle school level, it includes a large portion of Magee and, to a much lesser extent, Booth-Fickett.



Notes

- All of the projections are estimates based on current patterns of choice. There is no current data on 7th and 8th grade preference for a high school and little data on preferences for 6th grades in an elementary school. The exception is Drachman K-6 which has a 5th to 6th grade transition of 60 to 80%—in line with the 70% used in this analysis. The 5th to 6th transition rates at K-8 schools (50% to 80%) also support the estimate.
- The above estimates are based on current TUSD students. Because k-8 capture rates (TUSD students/total school age population) are less than 60% in the subject areas, there is a potential to attract students who do not currently attend TUSD schools and there is potential to attract students from outside TUSD. For example, as shown in the table below, 75% of the Fruchthendler 5th graders in SY2013-14 did not attend TUSD schools in 6th grade the following year.

Transition of Fruchthendler 5 th Graders into 6 th Grade	
School	Enrollment
Not in TUSD	47
Dodge Magnet	4
Doolen	1
Fickett Magnet	1
Gridley	1
Magee	9

- The estimate of students added to Sabino is based, in part, on the 7th and 8th graders in the entire Sabino HS Area, but the bulk of these students are expected to be those attending 6th grade at Fruchthendler. These enrollments would increase with recruitment of students not in TUSD schools and recruitment of students from outside TUSD. The potential of this approach is indicated in the table below, which shows that 82 students entering the Sabino 9th grade this year did not attend TUSD schools last year.

Transition of 8th Graders into the 9 th Grade at Sabino	
School	Enroll
TUSD Area students not in TUSD middle schools	82
TUSD Area students in TUSD middle schools	138
Amphitheater SD	1
Catalina Foothills SD	3
Sunnyside SD	5
Tanque Verde SD	33